



PARAGON STAR NORTH VILLAGE

3200 NW PARAGON PKWY
LEE'S SUMMIT, MO 64081

Project No.: 18017.19050.07.19050.08
Date: 01.28.22
Issued For: DESIGN DEVELOPMENT

REVISIONS	
No.	Description

REGISTRATION

NOT FOR CONSTRUCTION

PROJECT TEAM

ARCHITECT	FINKLE+WILLIAMS ARCHITECTURE
CIVIL	GBA ENGINEERS
LANDSCAPE	LAND 3
STRUCTURAL	BOB D. CAMPBELL
PLUMBING	LATIMER SOMMERS
MECHANICAL	LATIMER SOMMERS
ELECTRICAL	LATIMER SOMMERS
FIRE PROTECTION	LATIMER SOMMERS
CONTRACTOR	BRINKMANN CONSTRUCTORS



FINKLE + WILLIAMS ARCHITECTURE

8787 RENNER BLVD., SUITE 100
LENEXA, KANSAS 66219
913.498.1550
www.finklewilliams.com

SHEET TITLE

FIRST FLOOR PLAN

SHEET NUMBER

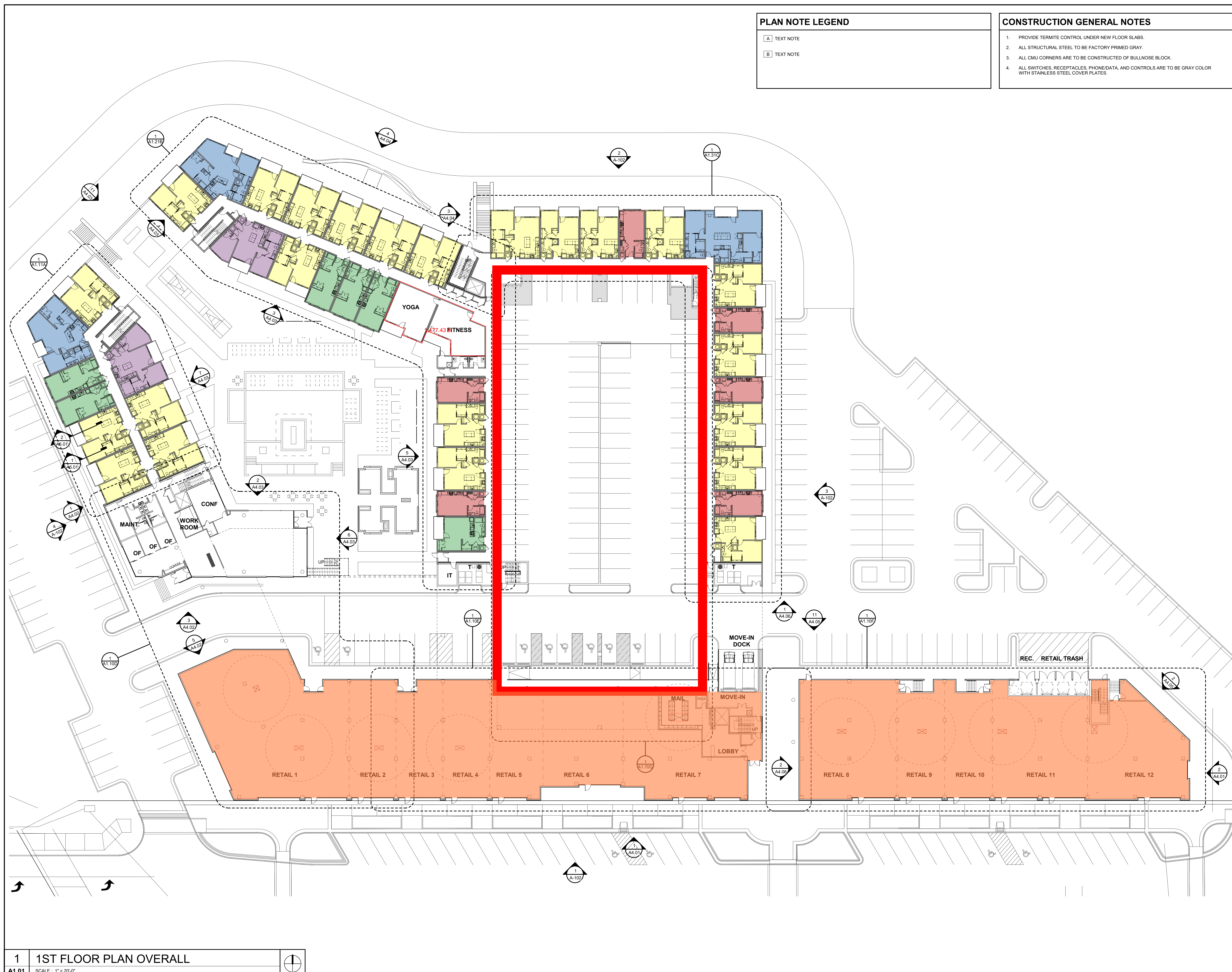
A1.01

PLAN NOTE LEGEND

- A TEXT NOTE
- B TEXT NOTE

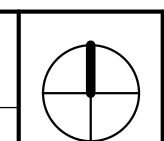
CONSTRUCTION GENERAL NOTES

1. PROVIDE TERMITE CONTROL UNDER NEW FLOOR SLABS.
2. ALL STRUCTURAL STEEL TO BE FACTORY PRIMED GRAY.
3. ALL CMU CORNERS ARE TO BE CONSTRUCTED OF BULLNOSE BLOCK.
4. ALL SWITCHES, RECEPTACLES, PHONE/DATA, AND CONTROLS ARE TO BE GRAY COLOR WITH STAINLESS STEEL COVER PLATES.



C:\Users\Katie Kemmer\Documents\Paragon Star_MultiFamily_R21_Central_KeliseR\Images\nt

1 1ST FLOOR PLAN OVERALL



A1.01 SCALE: 1" = 20'-0"



**PARAGON STAR
NORTH VILLAGE**

3200 NW PARAGON PKWY
LEE'S SUMMIT, MO 64081

Project No.: 18017.19050.07.19050.08
Date: 01.28.22
Issued For: DESIGN DEVELOPMENT

REVISIONS

No.	Date	Description

REGISTRATION

NOT FOR CONSTRUCTION

PROJECT TEAM

ROLE	NAME
ARCHITECT	FINKLE+WILLIAMS ARCHITECTURE
CIVIL	GBA ENGINEERS
LANDSCAPE	LAND 3
STRUCTURAL	BOB D. CAMPBELL
PLUMBING	LATIMER SOMMERS
MECHANICAL	LATIMER SOMMERS
ELECTRICAL	LATIMER SOMMERS
FIRE PROTECTION	LATIMER SOMMERS
CONTRACTOR	BRINKMANN CONSTRUCTORS

**FINKLE + WILLIAMS
ARCHITECTURE**

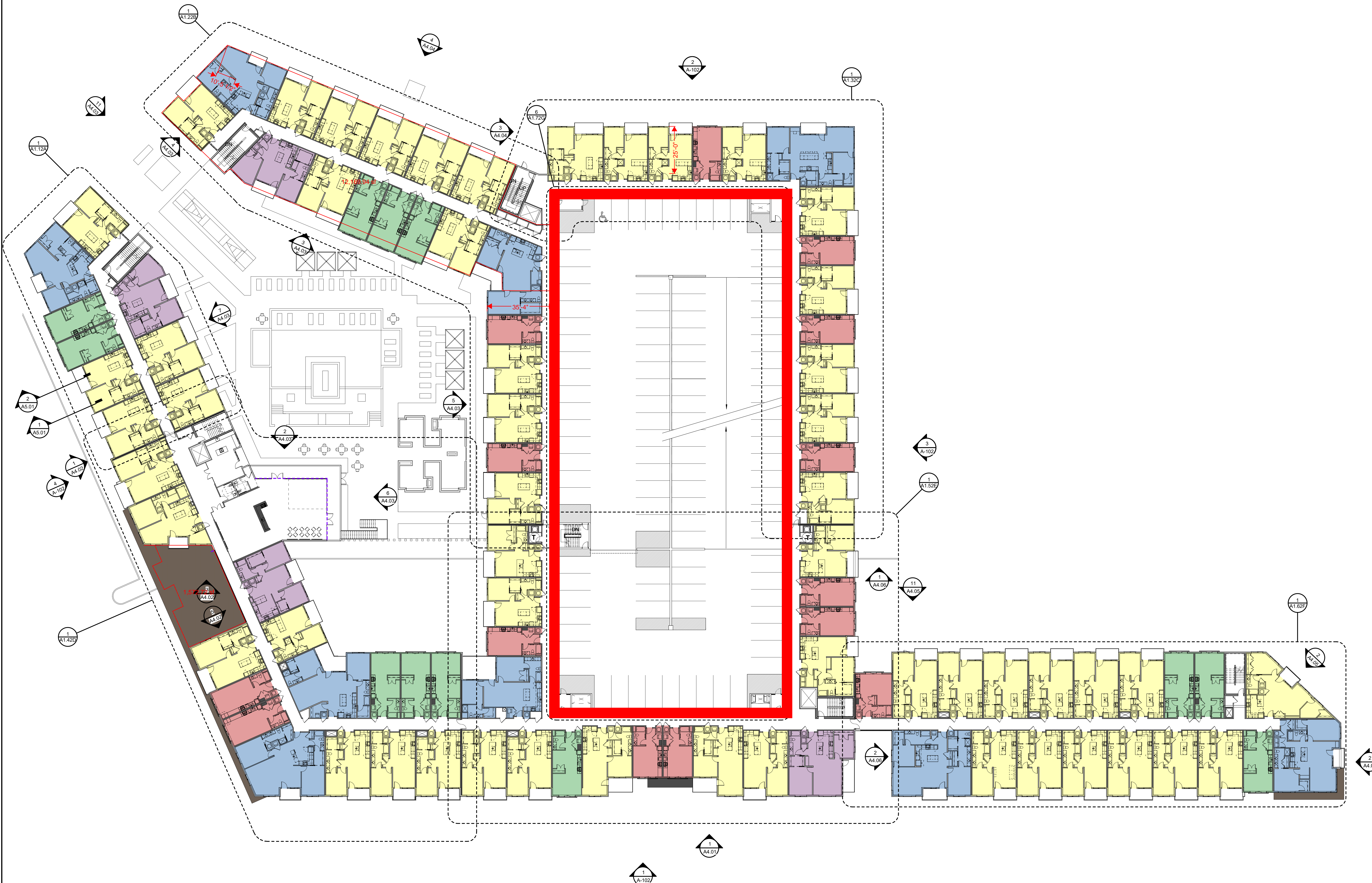
8787 RENNER BLVD., SUITE 100
LENEXA, KANSAS 66219
913.498.1550
www.finklewilliams.com

SHEET TITLE

SECOND FLOOR PLAN

SHEET NUMBER

A1.02



C:\Users\Katie Kemmer\Documents\Paragon Star_MultiFamily_R21_Central_Keliser\Camest.rvt