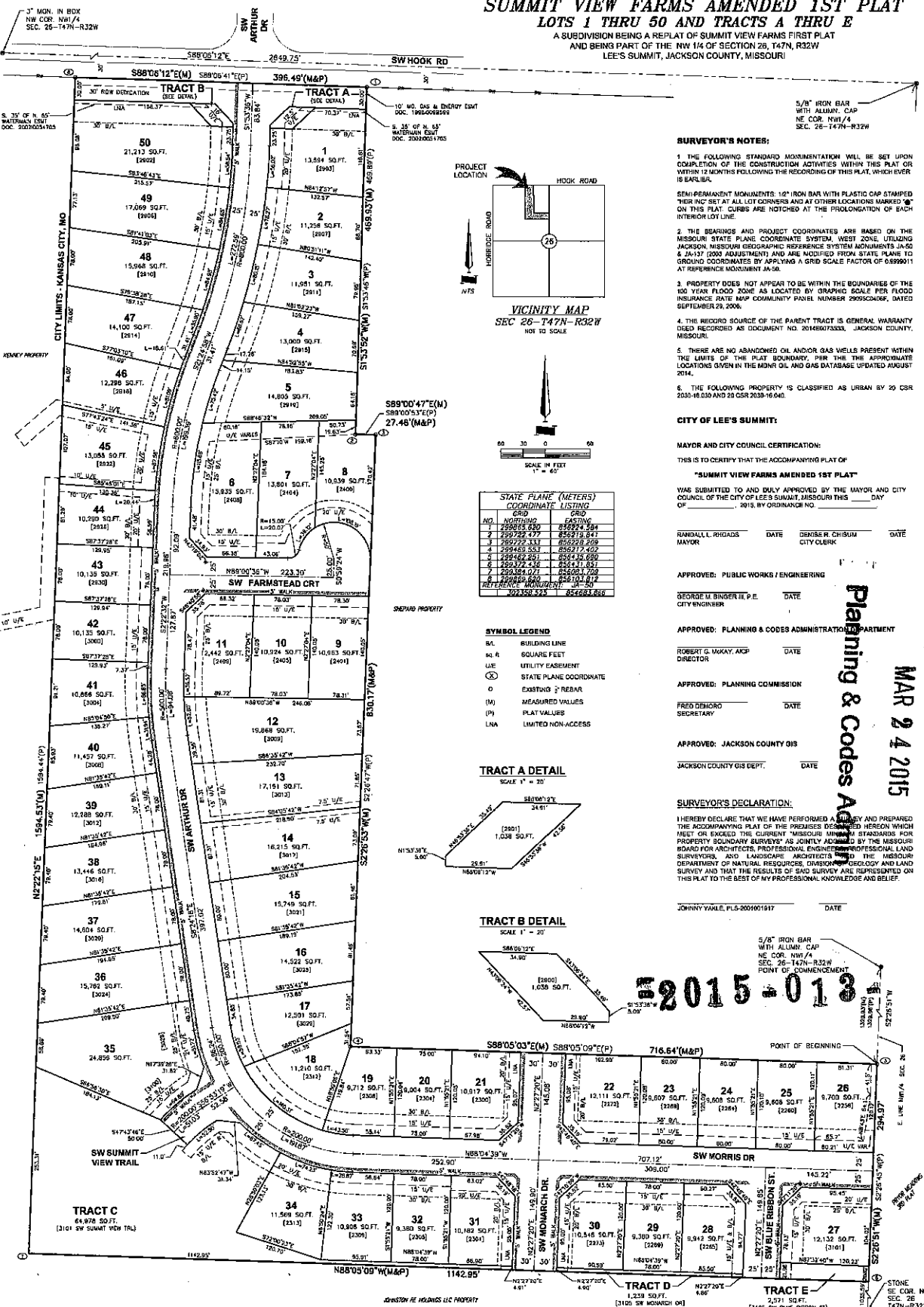
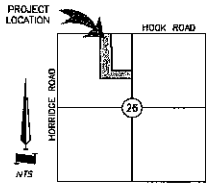


FINAL PLAT
SUMMIT VIEW FARMS AMENDED 1ST PLAT
LOTS 1 THRU 50 AND TRACTS A THRU E
 A SUBDIVISION BEING A REPLAT OF SUMMIT VIEW FARMS FIRST PLAT
 AND BEING PART OF THE NW 1/4 OF SECTION 26, T47N, R32W
 LEE'S SUMMIT, JACKSON COUNTY, MISSOURI



SURVEYOR'S NOTES:

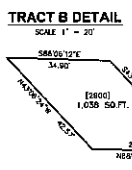
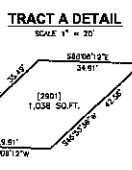
- THE FOLLOWING STANDARD MONUMENTATION WILL BE SET UPON COMPLETION OF THE CONSTRUCTION ACTIVITIES WITHIN THIS PLAT OR WITHIN 12 MONTHS FOLLOWING THE RECORDING OF THIS PLAT, WHICHEVER IS EARLIER.
 SEMI-PERMANENT MONUMENTS: 1/2" IRON BAR WITH PLASTIC CAP STAMPED "THIS MONUMENT SET AT ALL LOT CORNERS AND AT OTHER LOCATIONS MARKED "M" ON THIS PLAT. CURBS ARE NOTICED AT THE PROLONGATION OF EACH INTERIOR LOT LINE.
- THE BEARINGS AND PROJECT COORDINATES ARE BASED ON THE MISSOURI STATE PLANE COORDINATE SYSTEM, WEST ZONE, UTILIZING JACKSON MISSOURI GEODESIC REFERENCE SYSTEM MONUMENTS J-60 & J-61-37 (2003 ADJUSTMENT) AND ARE MODIFIED FROM STATE PLANE TO GROUND COORDINATES BY APPLYING A GRID SCALE FACTOR OF 0.9999011 AT REFERENCE MONUMENT J-60.
- PROPERTY DOES NOT APPEAR TO BE WITHIN THE BOUNDARIES OF THE 100 YEAR FLOOD ZONE AS LOCATED BY GRAPHIC SCALE PER FLOOD INSURANCE RATE MAP COMMUNITY PANEL NUMBER 290550406F, DATED SEPTEMBER 28, 2006.
- THE RECORD SOURCE OF THE PARENT TRACT IS GENERAL WARRANTY DEED RECORDED AS DOCUMENT NO. 20146603333, JACKSON COUNTY, MISSOURI.
- THERE ARE NO ABANDONED OIL AND/OR GAS WELLS PRESENT WITHIN THE LIMITS OF THE PLAT BOUNDARY, PER THE APPROXIMATE LOCATIONS GIVEN IN THE MOBILE OIL AND GAS DATABASE UPDATED AUGUST 2014.
- THE FOLLOWING PROPERTY IS CLASSIFIED AS URBAN BY ZSR 2010-16.030 AND ZSR 2010-16.040.



STATE PLANE (METERS) COORDINATE LISTING

NO.	NORTHING	EASTING
1	299055.290	842274.294
2	299222.177	842118.847
3	299222.177	842228.209
4	299462.251	842177.602
5	299462.251	842177.602
6	299722.232	842177.602
7	299722.232	842177.602
8	299669.260	842103.612
9	299669.260	842103.612
10	299350.243	842682.636

- SYMBOL LEGEND**
- BL BUILDING LINE
 - sq. ft. SQUARE FEET
 - U/E UTILITY EASEMENT
 - ⊙ STATE PLANE COORDINATE
 - EXISTING CURB
 - (M) MEASURED VALUES
 - (P) PLAT VALUES
 - LNA LIMITED NON-ACCESS



CITY OF LEE'S SUMMIT:

MAYOR AND CITY COUNCIL CERTIFICATION:
 THIS IS TO CERTIFY THAT THE ACCOMPANYING PLAT OF
"SUMMIT VIEW FARMS AMENDED 1ST PLAT"
 WAS SUBMITTED TO AND DULY APPROVED BY THE MAYOR AND CITY COUNCIL OF THE CITY OF LEE'S SUMMIT, MISSOURI THIS ___ DAY OF _____ 2015, BY ORDINANCE NO. _____

RANDALL RHODES DATE DENISE R. CHISHAM DATE
 MAYOR CITY CLERK

APPROVED: PUBLIC WORKS / ENGINEERING
 GEORGE W. BINDERLE, P.E. DATE
 CITY ENGINEER

APPROVED: PLANNING & CODES ADMINISTRATION DEPARTMENT
 ROBERT G. MCKAY, ACP DATE
 DIRECTOR

APPROVED: PLANNING COMMISSION
 FRED BENDRO DATE
 SECRETARY

APPROVED: JACKSON COUNTY GIS
 JACKSON COUNTY GIS DEPT. DATE

SURVEYOR'S DECLARATION:
 I HEREBY DECLARE THAT I HAVE PERFORMED A SURVEY AND PREPARED THE ACCOMPANYING PLAT OF THE PREMISES EXHIBITED HEREON WHICH MEET OR EXCEED THE CURRENT "MISSOURI MINIMUM STANDARDS FOR PROPERTY BOUNDARY SURVEYS" AS JOINTLY ADOPTED BY THE MISSOURI BOARD FOR ARCHITECTS, PROFESSIONAL ENGINEERS, PROFESSIONAL LAND SURVEYORS, AND LANDSCAPE ARCHITECTS AND THE MISSOURI DEPARTMENT OF NATURAL RESOURCES, DIVISION OF GEOLOGY AND LAND SURVEY AND THAT THE RESULTS OF SAID SURVEY ARE REPRESENTED ON THIS PLAT TO THE BEST OF MY PROFESSIONAL KNOWLEDGE AND BELIEF.

JOHNNY YAKLE, PLS-2001001917 DATE

5/8" IRON BAR WITH ALUMIN. CAP NE COR. NW 1/4 SEC. 26-147N-R32W POINT OF COMMENCEMENT

2015-013

RECEIVED

Planning & Codes Administration

MAR 24 2015

FINAL PLAT
 SUMMIT VIEW FARMS AMENDED 1ST PLAT
 BEING A REPLAT OF SUMMIT VIEW FARMS FIRST PLAT
 LEE'S SUMMIT, JACKSON COUNTY, MISSOURI
 SUMMIT VIEW FARMS DEVELOPMENT GROUP, L.L.C.
 c/o BILL KENNEY
 P.O. BOX 291
 LEE'S SUMMIT, MO 64069



NO.	SITE	PT.	REVISION
1	000001	PL	CONTRIBUTIONS
2			
3			
4			
5			
6			
7			
8			
9			
10			
11			
12			
13			
14			
15			
16			
17			
18			
19			
20			
21			
22			
23			
24			
25			
26			
27			
28			
29			
30			
31			
32			
33			
34			
35			
36			
37			
38			
39			
40			
41			
42			
43			
44			
45			
46			
47			
48			
49			
50			

3741 N.E. TRIGON DRIVE
 LEE'S SUMMIT, MO 64064
 PH816.347.1100 FAX816.347.1197
 MO. STATE C.O.A. #000856