

VILLAGE AT VIEW HIGH APARTMENTS

Jim Thomas
Partner

Cityscape Residential

- Communities in KC area
 - Residences at Prairiefire
 - West End Flats at Prairiefire
 - Greenwood Reserve (Olathe)
 - Apex on Quality Hill
 - Summit on Quality Hill
 - Crossroads Westside
 - Village at View High

Residences at Prairiefire Overland Park

Residences at Prairiefire



Residences at Prairiefire



Residences at Prairiefire



Residences at Prairiefire



Residences at Prairiefire



Residences at Prairiefire



Residences at Prairiefire



Residences at Prairiefire



Residences at Prairiefire



Residences at Prairiefire



Greenwood Reserve

Olathe

Greenwood Reserve - Olathe



Greenwood Reserve - Olathe



Greenwood Reserve - Olathe



Greenwood Reserve - Olathe



Greenwood Reserve - Olathe



Greenwood Reserve - Olathe



Greenwood Reserve - Olathe



Greenwood Reserve - Olathe



Greenwood Reserve - Olathe



Greenwood Reserve - Olathe



Greenwood Reserve - Olathe



Summit & Apex Quality Hill

Kansas City, MO

Summit on Quality Hill



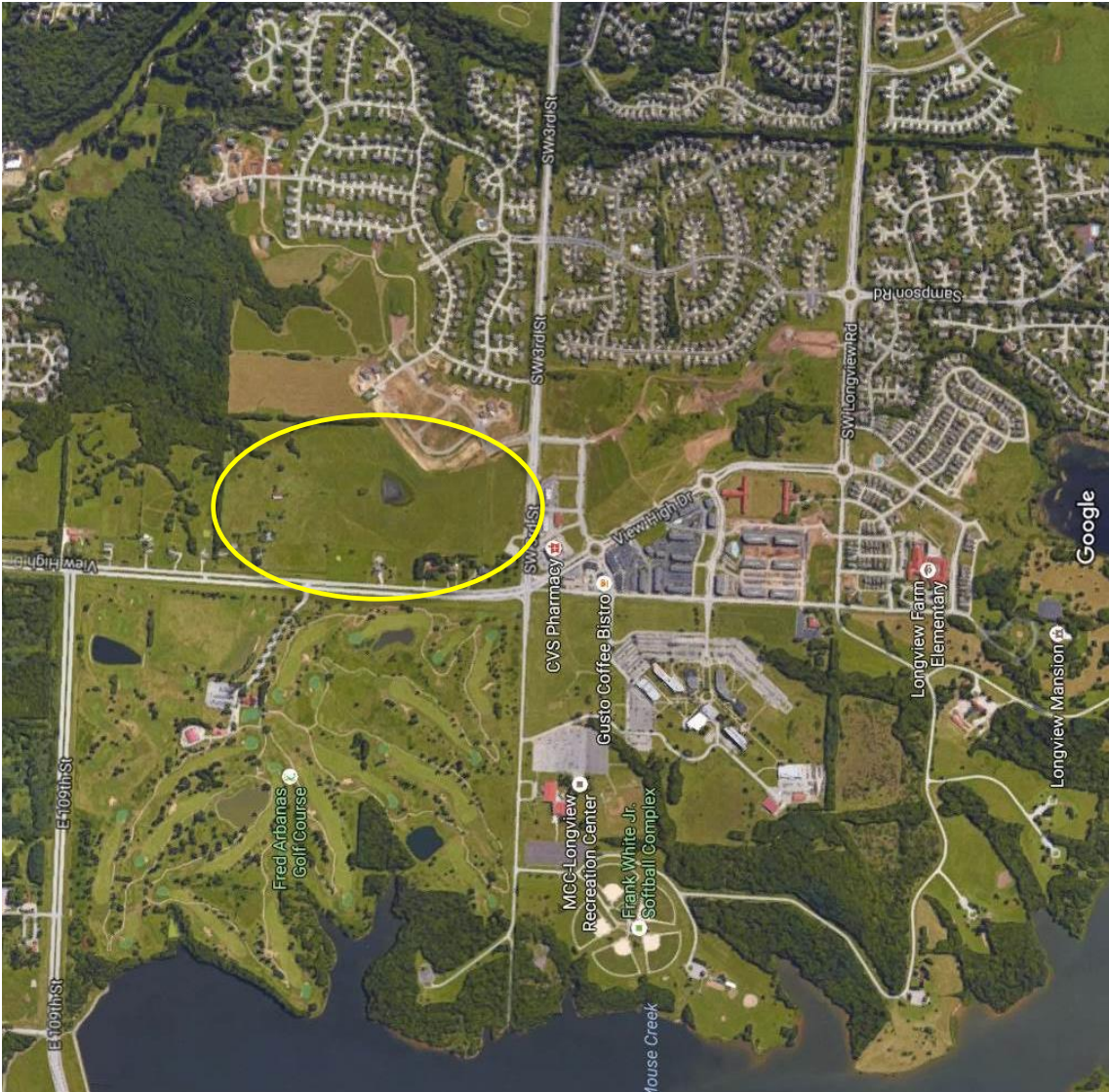
Summit on Quality Hill



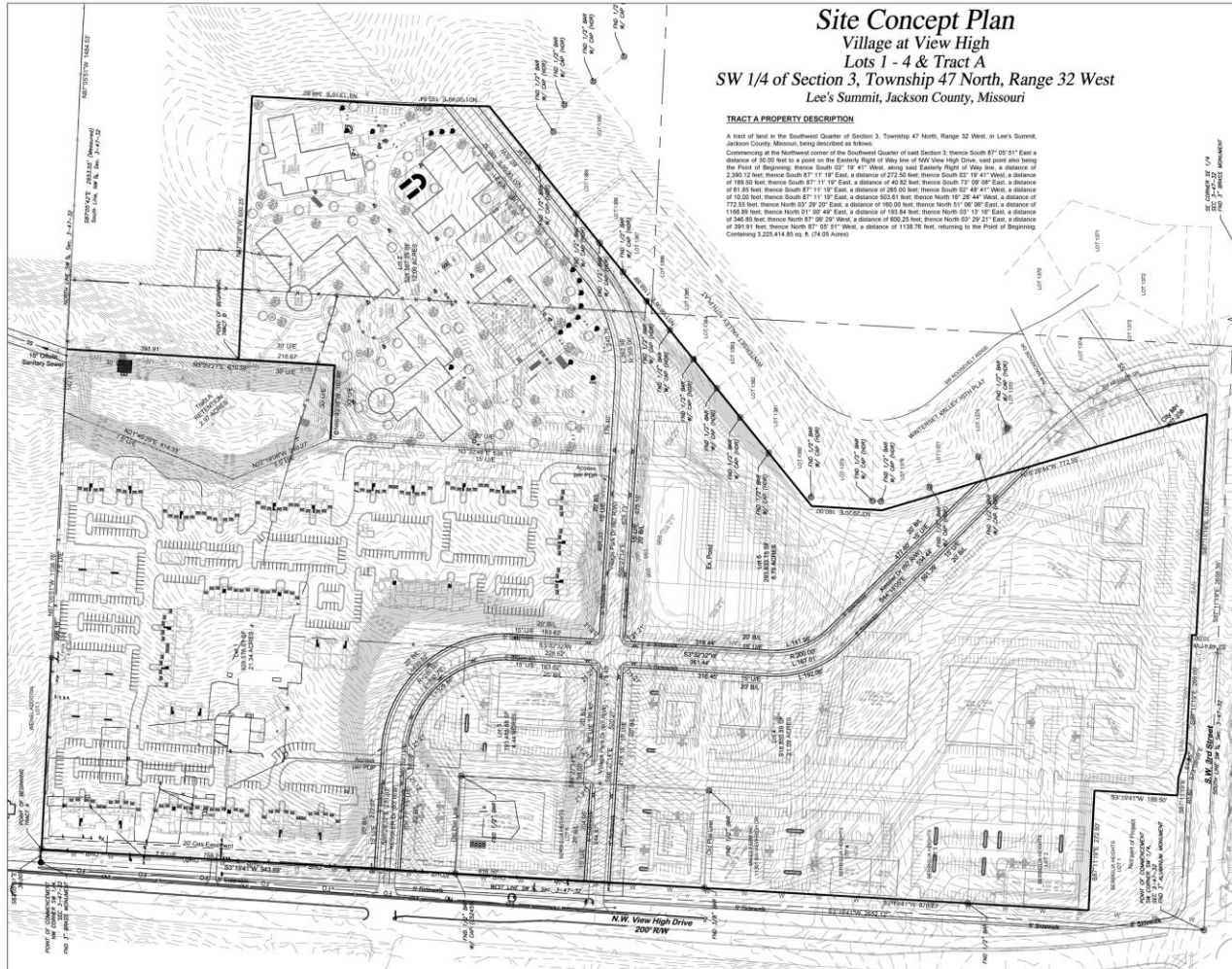


Village at View High Lee's Summit

Village at View High

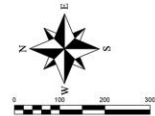


Village at View High



Site Concept Plan Village at View High Lots 1 - 4 & Tract A SW 1/4 of Section 3, Township 47 North, Range 32 West Lee's Summit, Jackson County, Missouri

TRACT A PROPERTY DESCRIPTION
A tract of land in the Southeast Quarter of Section 3, Township 47 North, Range 32 West, in Lee's Summit, Jackson County, Missouri, being described as follows:
Commencing at the Northwest corner of the Southeast Quarter of said Section 3, thence South 87° 05' 51" East a distance of 28.85 feet to a point on the Eastern Right of Way line of NW View High Drive, said point also being the Point of Beginning; thence South 02° 19' 41" West, along said Eastern Right of Way line, a distance of 2,362.32 feet; thence South 87° 11' 19" East, a distance of 372.25 feet; thence South 02° 19' 41" West, a distance of 189.83 feet; thence South 87° 11' 19" East, a distance of 40.82 feet; thence South 73° 09' 08" East, a distance of 10.02 feet; thence South 87° 11' 19" East, a distance of 503.51 feet; thence North 19° 28' 44" West, a distance of 772.62 feet; thence North 02° 29' 29" East, a distance of 380.09 feet; thence North 51° 09' 08" East, a distance of 1168.89 feet; thence North 01° 02' 49" East, a distance of 193.84 feet; thence North 02° 19' 41" East, a distance of 346.83 feet; thence North 87° 09' 29" West, a distance of 600.22 feet; thence North 02° 29' 21" East, a distance of 381.81 feet; thence North 87° 09' 51" West, a distance of 1138.76 feet, returning to the Point of Beginning. Containing 3,223.41 ± sq. ft. (74.03 Acres).



- LEGEND**
- These standard symbols will be found in the drawing.
- Set 1/2" Rubber & Cap (L.S. 200508819-D)
 - Found Survey Monument (As Noted)
 - Easement Document Location
 - Existing Fence Line - Chain Link
 - Existing Water Line
 - Existing Sanitary Sewer Main
 - Existing Storm Sewer
 - Existing Gas Line
 - Existing Underground Telephone
 - Existing Underground Electric

REVISIONS	
NO.	REVISION

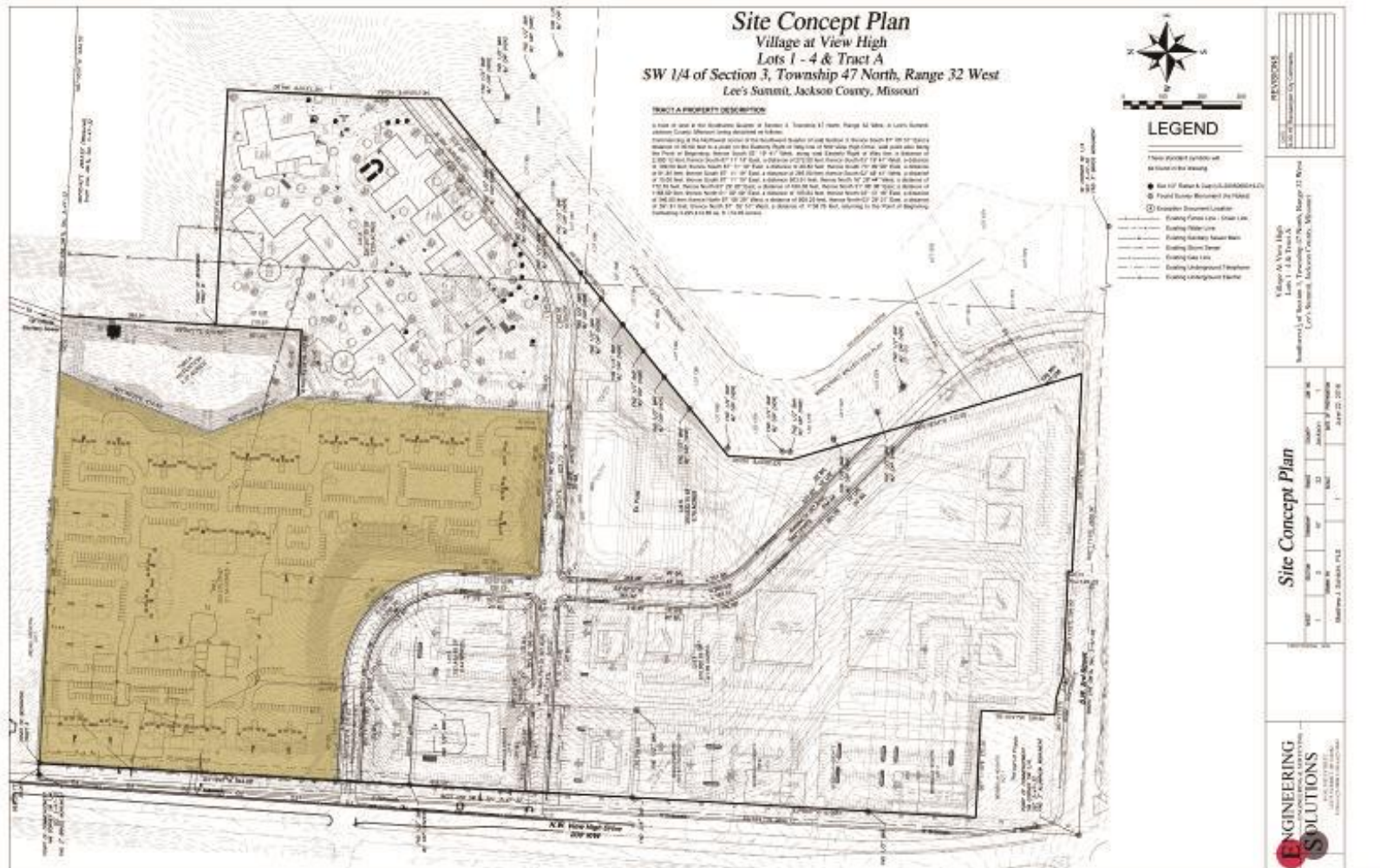
Village at View High
Lots 1 - 4 & Tract A
Southwest 1/4 of Section 3, Township 47 North, Range 32 West
Lee's Summit, Jackson County, Missouri

Site Concept Plan

DATE	BY	SCALE	DATE OF REVISION
1	3	1/4" = 100'	1
2	3	1/4" = 100'	1
3	3	1/4" = 100'	1
4	3	1/4" = 100'	1
5	3	1/4" = 100'	1
6	3	1/4" = 100'	1
7	3	1/4" = 100'	1
8	3	1/4" = 100'	1
9	3	1/4" = 100'	1
10	3	1/4" = 100'	1
11	3	1/4" = 100'	1
12	3	1/4" = 100'	1
13	3	1/4" = 100'	1
14	3	1/4" = 100'	1
15	3	1/4" = 100'	1
16	3	1/4" = 100'	1
17	3	1/4" = 100'	1
18	3	1/4" = 100'	1
19	3	1/4" = 100'	1
20	3	1/4" = 100'	1
21	3	1/4" = 100'	1
22	3	1/4" = 100'	1
23	3	1/4" = 100'	1
24	3	1/4" = 100'	1
25	3	1/4" = 100'	1
26	3	1/4" = 100'	1
27	3	1/4" = 100'	1
28	3	1/4" = 100'	1
29	3	1/4" = 100'	1
30	3	1/4" = 100'	1
31	3	1/4" = 100'	1
32	3	1/4" = 100'	1
33	3	1/4" = 100'	1
34	3	1/4" = 100'	1
35	3	1/4" = 100'	1
36	3	1/4" = 100'	1
37	3	1/4" = 100'	1
38	3	1/4" = 100'	1
39	3	1/4" = 100'	1
40	3	1/4" = 100'	1
41	3	1/4" = 100'	1
42	3	1/4" = 100'	1
43	3	1/4" = 100'	1
44	3	1/4" = 100'	1
45	3	1/4" = 100'	1
46	3	1/4" = 100'	1
47	3	1/4" = 100'	1
48	3	1/4" = 100'	1
49	3	1/4" = 100'	1
50	3	1/4" = 100'	1
51	3	1/4" = 100'	1
52	3	1/4" = 100'	1
53	3	1/4" = 100'	1
54	3	1/4" = 100'	1
55	3	1/4" = 100'	1
56	3	1/4" = 100'	1
57	3	1/4" = 100'	1
58	3	1/4" = 100'	1
59	3	1/4" = 100'	1
60	3	1/4" = 100'	1
61	3	1/4" = 100'	1
62	3	1/4" = 100'	1
63	3	1/4" = 100'	1
64	3	1/4" = 100'	1
65	3	1/4" = 100'	1
66	3	1/4" = 100'	1
67	3	1/4" = 100'	1
68	3	1/4" = 100'	1
69	3	1/4" = 100'	1
70	3	1/4" = 100'	1
71	3	1/4" = 100'	1
72	3	1/4" = 100'	1
73	3	1/4" = 100'	1
74	3	1/4" = 100'	1
75	3	1/4" = 100'	1
76	3	1/4" = 100'	1
77	3	1/4" = 100'	1
78	3	1/4" = 100'	1
79	3	1/4" = 100'	1
80	3	1/4" = 100'	1
81	3	1/4" = 100'	1
82	3	1/4" = 100'	1
83	3	1/4" = 100'	1
84	3	1/4" = 100'	1
85	3	1/4" = 100'	1
86	3	1/4" = 100'	1
87	3	1/4" = 100'	1
88	3	1/4" = 100'	1
89	3	1/4" = 100'	1
90	3	1/4" = 100'	1
91	3	1/4" = 100'	1
92	3	1/4" = 100'	1
93	3	1/4" = 100'	1
94	3	1/4" = 100'	1
95	3	1/4" = 100'	1
96	3	1/4" = 100'	1
97	3	1/4" = 100'	1
98	3	1/4" = 100'	1
99	3	1/4" = 100'	1
100	3	1/4" = 100'	1

ENGINEERING SOLUTIONS
— ENGINEERING SOLUTIONS —
11111 N. STATE ST. SUITE 100
LEES SUMMIT, MISSOURI 64080
PH: 816.286.1111 FAX: 816.286.1112
WWW.ESOLUTIONS.COM

Village at View High - Apartments



Village at View High - Apartments



PROPOSED DEVELOPMENT
THIS IS AN APPROXIMATE LAYOUT AND NOT A CONTRACT. THE DEVELOPER RESERVES THE RIGHT TO MAKE CHANGES TO THE LAYOUT AND DESIGN WITHOUT NOTICE. THE DEVELOPER IS NOT RESPONSIBLE FOR ANY ERRORS OR OMISSIONS. THE DEVELOPER IS NOT PROVIDING ANY WARRANTIES OR REPRESENTATIONS. THE DEVELOPER IS NOT PROVIDING ANY SERVICES. THE DEVELOPER IS NOT PROVIDING ANY CONSULTING SERVICES. THE DEVELOPER IS NOT PROVIDING ANY DESIGN SERVICES. THE DEVELOPER IS NOT PROVIDING ANY ENGINEERING SERVICES. THE DEVELOPER IS NOT PROVIDING ANY ARCHITECTURAL SERVICES. THE DEVELOPER IS NOT PROVIDING ANY LANDSCAPE ARCHITECTURE SERVICES. THE DEVELOPER IS NOT PROVIDING ANY PLANNING SERVICES. THE DEVELOPER IS NOT PROVIDING ANY ENVIRONMENTAL SERVICES. THE DEVELOPER IS NOT PROVIDING ANY SOCIAL SERVICES. THE DEVELOPER IS NOT PROVIDING ANY COMMUNITY SERVICES. THE DEVELOPER IS NOT PROVIDING ANY CULTURAL SERVICES. THE DEVELOPER IS NOT PROVIDING ANY RECREATION SERVICES. THE DEVELOPER IS NOT PROVIDING ANY EDUCATION SERVICES. THE DEVELOPER IS NOT PROVIDING ANY HEALTH SERVICES. THE DEVELOPER IS NOT PROVIDING ANY SOCIAL SERVICES. THE DEVELOPER IS NOT PROVIDING ANY COMMUNITY SERVICES. THE DEVELOPER IS NOT PROVIDING ANY CULTURAL SERVICES. THE DEVELOPER IS NOT PROVIDING ANY RECREATION SERVICES. THE DEVELOPER IS NOT PROVIDING ANY EDUCATION SERVICES. THE DEVELOPER IS NOT PROVIDING ANY HEALTH SERVICES.



Village at View High



Building Type I

Building #'s 1, 4, 6 & 15, similar

Village at View High



Building Type I

Building #'s 1, 4, 6 & 15, similar

Village at View High



Building Types III & IV

Building #'s 9, 10, 12 & 16

Village at View High



Building Types III & IV

Building #'s 9, 10, 12 & 16

Village at View High

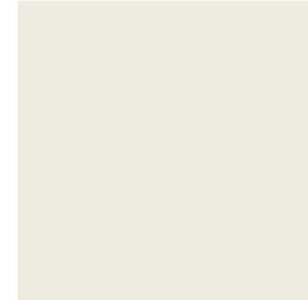


Village at View High



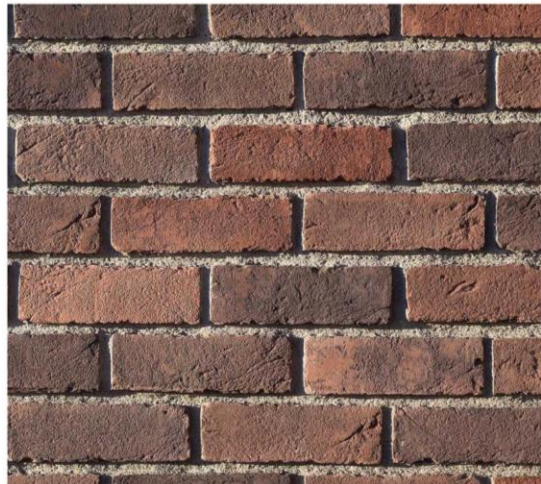
Certainteed, Landmark, Burnt Sienna

Roof Shingles

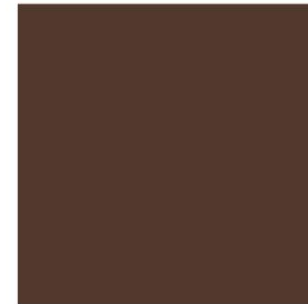


Sherwin Williams, Alabaster
SW 7008

Siding Color



Coronado, Antique Red



Sherwin Williams, French Roast
SW 6069

Trim Color

Village at View High



Village at View High - Apartments



PROPOSED DEVELOPMENT
THIS PLAN IS FOR INFORMATION ONLY AND DOES NOT REPRESENT A COMMITMENT BY THE DEVELOPER
OR ANY OTHER PARTY. THE DEVELOPER RESERVES THE RIGHT TO MODIFY OR CANCEL THIS PLAN AT ANY TIME
WITHOUT NOTICE. THE DEVELOPER IS NOT RESPONSIBLE FOR ANY ERRORS OR OMISSIONS.





Cityscape

Residential

WWW.CITYSCAPERESIDENTIAL.COM