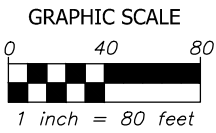


# EASEMENT VACATION EXHIBIT

## LOT 1A, HCA MIDWEST, LOTS 1A AND 1B

### CITY OF LEE'S SUMMIT, JACKSON COUNTY, MISSOURI

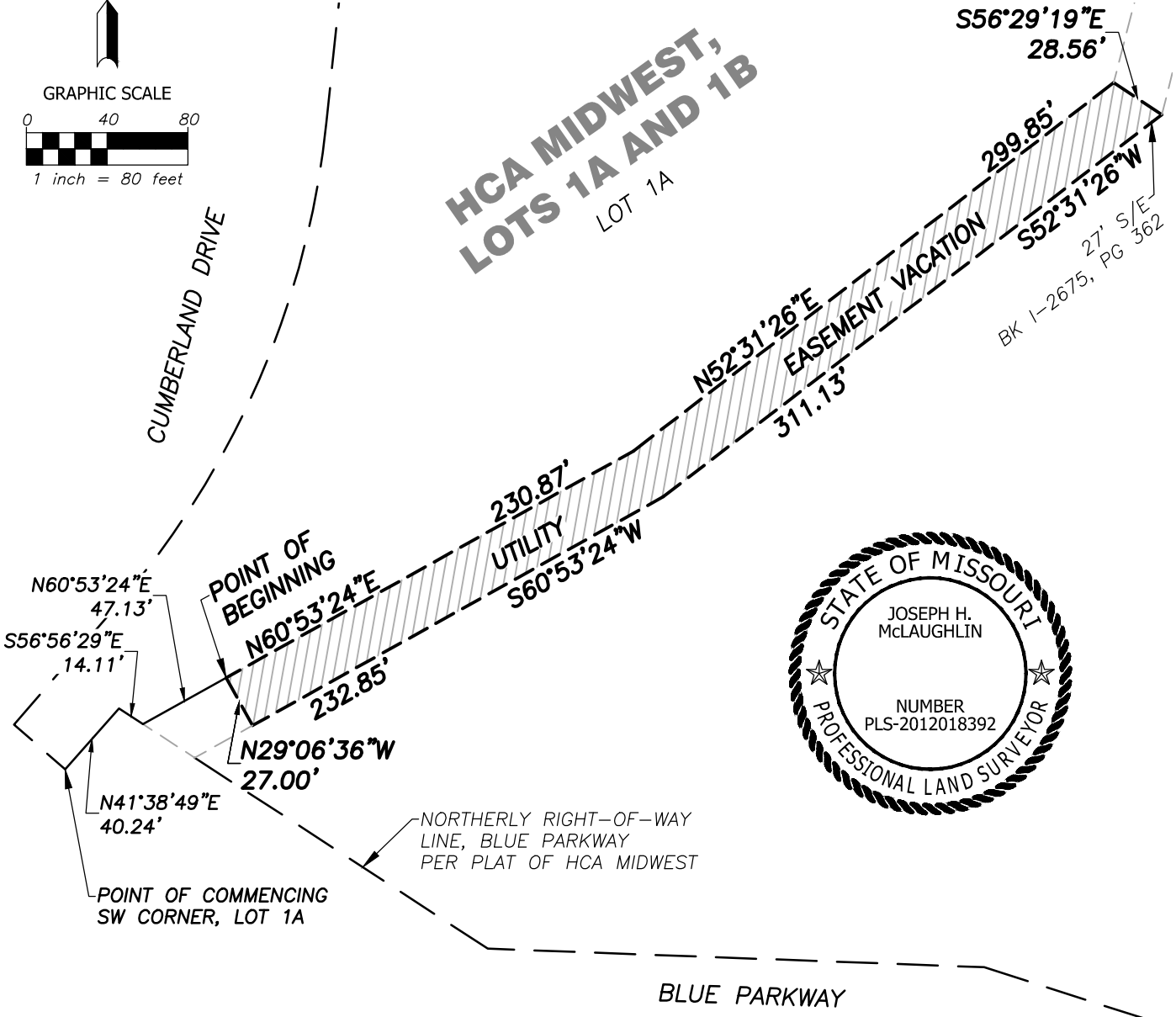
#### MAP (SEE SHEET 2 FOR DESCRIPTION)



CUMBERLAND DRIVE

**HCA MIDWEST,  
LOTS 1A AND 1B**

LOT 1A



Dec 21, 2022 - 7:54am Plotted by: joe.mclaughlin i:\034660.00.01\_Shenendoah Lee's Summit Eng Des\DWG\Survey\034660-SRVY-ESMT VACA.dwg

Sheet:	<b>1</b>	TAR	N/A	Project:	Client:	<p><b>CIVIL ENGINEERING / SURVEYING / UTILITIES</b> 712 State Avenue, Kansas City, KS 66101 Phone: (913) 371-5300</p>
OF	<b>2</b>	Drawn By:	Field Date:	SANITARY SEWER EASEMENT VACATION, LOT 1A, HCA MIDWEST, LOTS 1A & 1B CITY OF LEE'S SUMMIT, JACKSON COUNTY, MISSOURI	ACI BOLAND ARCHITECTURE 1710 WYANDOTTE STREET, KANSAS CITY, MO 64108	
		Project No:	Issue Date:			
		034660	12.05.22			

# EASEMENT VACATION EXHIBIT

## LOT 1A, HCA MIDWEST, LOTS 1A AND 1B

### CITY OF LEE'S SUMMIT, JACKSON COUNTY, MISSOURI

#### DESCRIPTION (SEE SHEET 1 FOR MAP)

All that part of a Utility Easement, established in Book I-2675, Page 362, lying within Lot 1A, as shown on the Minor Plat of HCA MIDWEST, Lots 1A and 1B, recorded October 1, 2007, and filed as Instrument Number 2007E00127459, in the City of Lee's Summit, Jackson County, Missouri, said Tract being more particularly described by Joseph H. McLaughlin, PLS 2012018392, with BHC, CLS 2006009875-F, by metes and bounds as follows;

(Note: For course orientation, the bearings in this description are based on the Northerly Right-of-Way line of Blue Parkway as now established, having a bearing of South 56° 56' 29" East, referenced to the Missouri State Plane Coordinate System, West Zone, NAD83.)

Commencing at the most Southerly corner of Lot 1A, of the Minor Plat of HCA MIDWEST, LOTS 1A AND 1B, recorded October 1, 2007, and filed as Instrument Number 2007E00127459, in the City of Lee's Summit, Jackson County, Missouri;

Thence North 41° 38' 49" East, 40.24 feet, on North Right-of-Way line of said Blue Parkway as now established;

Thence South 56° 56' 29" East, 14.11 feet, on said North Right-of-Way line, to its intersection with the Northerly line of a Utility Easement established in Book I-2675, Page 362;

Thence North 60° 53' 24" East, 47.13 feet, on said Northerly easement line, to the POINT OF BEGINNING of the easement vacation herein described;

Thence continuing North 60° 53' 24" East, 230.87 feet;

Thence North 52° 31' 26" East, 299.85 feet;

Thence South 56° 29' 19" East, 28.56 feet, to the southerly line of said sanitary sewer easement;

Thence South 52° 31' 26" West, 311.13 feet, on said southerly easement line;

Thence South 60° 53' 24" West, 232.85 feet, on said southerly easement line;

Thence North 29° 06' 36" West, 27.00 feet, to the POINT OF BEGINNING, said Tract containing 14,508 square feet, or 0.3331 acres.



Dec 21, 2022 - 7:55am Plotted by: joe.mclaughlin i:\034660.00.01\_Shenendoah Lee's Summit Eng Des\DWG\Survey\034660-SRVY-ESMT VACA.dwg

Sheet:	TAR	Project:
2	034660	SANITARY SEWER
OF	N/A	EASEMENT VACATION,
2	12.05.22	LOT 1A, HCA MIDWEST, LOTS 1A & 1B
Drawn By:		CITY OF LEE'S SUMMIT,
Project No:		JACKSON COUNTY, MISSOURI
Field Date:		
Issue Date:		

Client:  
 ACI BOLAND ARCHITECTURE  
 1710 WYANDOTTE STREET,  
 KANSAS CITY, MO 64108



**CIVIL ENGINEERING / SURVEYING / UTILITIES**  
 712 State Avenue, Kansas City, KS 66101  
 Phone: (913) 371-5300