

-2013-002-

RECEIVED

APR 03 2013

PRELIMINARY PLAT OF
PARK RIDGE
LOTS 206 THRU 381
AND TRACTS A THRU I
IN SEC. 9 AND 10, TWP. 46 RING. 3
JACKSON COUNTY, MO.

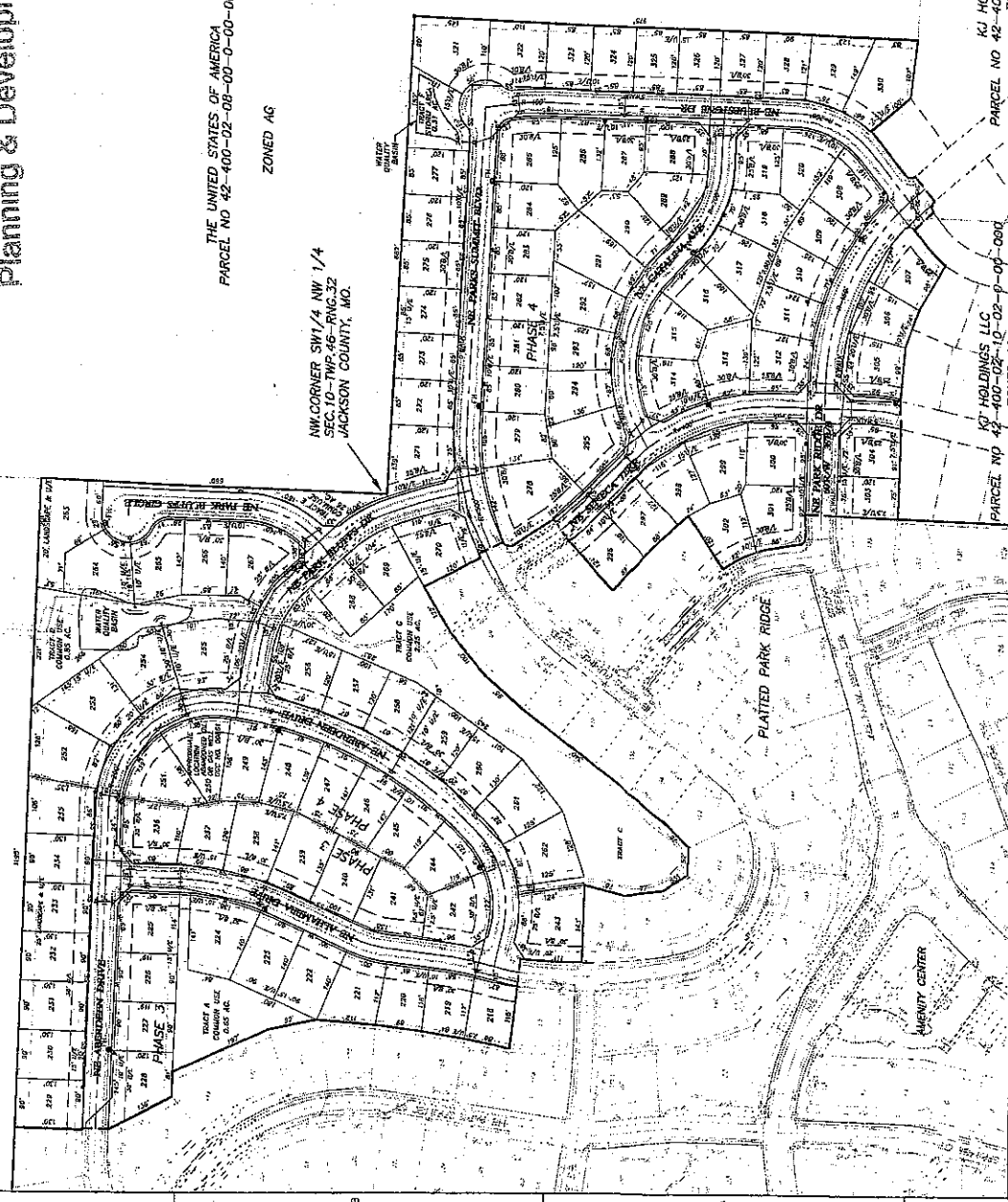
THE UNITED STATES OF AMERICA
PARCEL NO 43-610-99-01-00-0-00-000
ZONED AG

planning & Development

THE UNITED STATES OF AMERICA
PARCEL NO 42-400-02-08-00-0-00-000
ZONED AG

NW CORNER SW 1/4 NW 1/4
SEC. 10-TWP 46-RNG 32
JACKSON COUNTY, MO.

KJ HOLDINGS LLC
PARCEL NO 43-400-02-10-02-0-00-000
ZONED AG



HDR

HDR Engineering, Inc.

DEVELOPER INFORMATION
ALCH DEVELOPMENT, LLC
370 NE CARNEGIE DR. SUITE 400
LEES SUMMIT, MO 64084
PHONE (866) 242-9000



NO.	DATE	DESCRIPTION
1	4-02-13	REV PER CITY COMMENTS
2	1-02-13	PRELIMINARY SUBMITTAL
3		
4		
5		
6		
7		
8		
9		
10		
11		
12		
13		
14		
15		
16		
17		
18		
19		
20		
21		
22		
23		
24		
25		
26		
27		
28		
29		
30		
31		
32		
33		
34		
35		
36		
37		
38		
39		
40		
41		
42		
43		
44		
45		
46		
47		
48		
49		
50		
51		
52		
53		
54		
55		
56		
57		
58		
59		
60		
61		
62		
63		
64		
65		
66		
67		
68		
69		
70		
71		
72		
73		
74		
75		
76		
77		
78		
79		
80		
81		
82		
83		
84		
85		
86		
87		
88		
89		
90		
91		
92		
93		
94		
95		
96		
97		
98		
99		
100		

PRELIMINARY
NOT FOR
CONSTRUCTION
OR
RECORDING

PRELIMINARY PLAT OF
PARK RIDGE
LOTS 206 THRU 381
AND TRACTS A THRU I

SCALE: 1"=100'

SHEET 2 OF 3

RELEASED Preliminary Plat 2013

