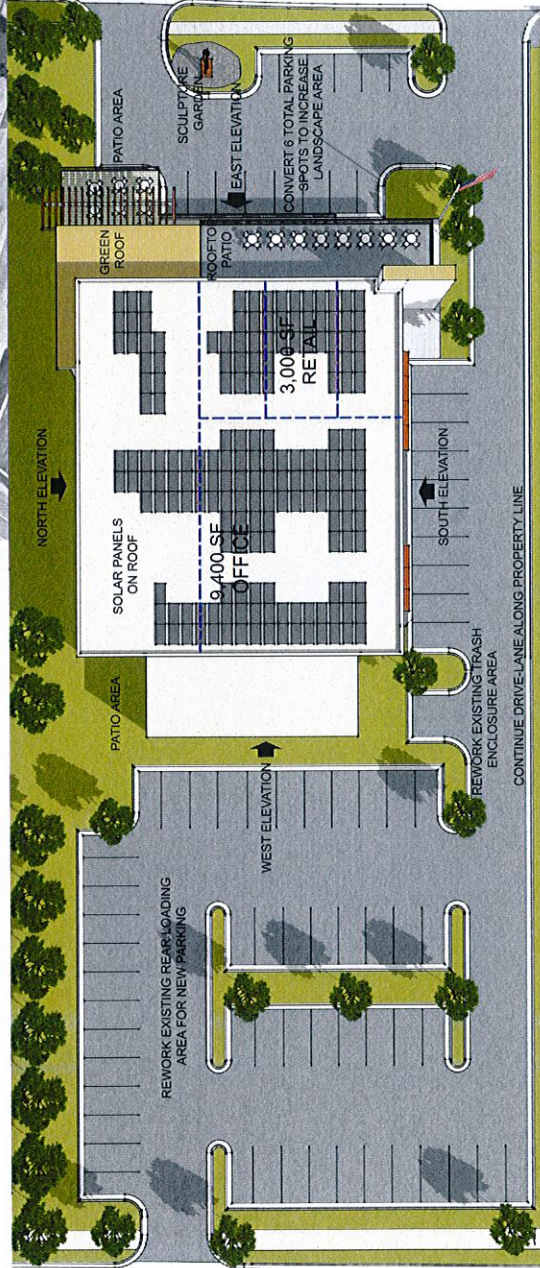
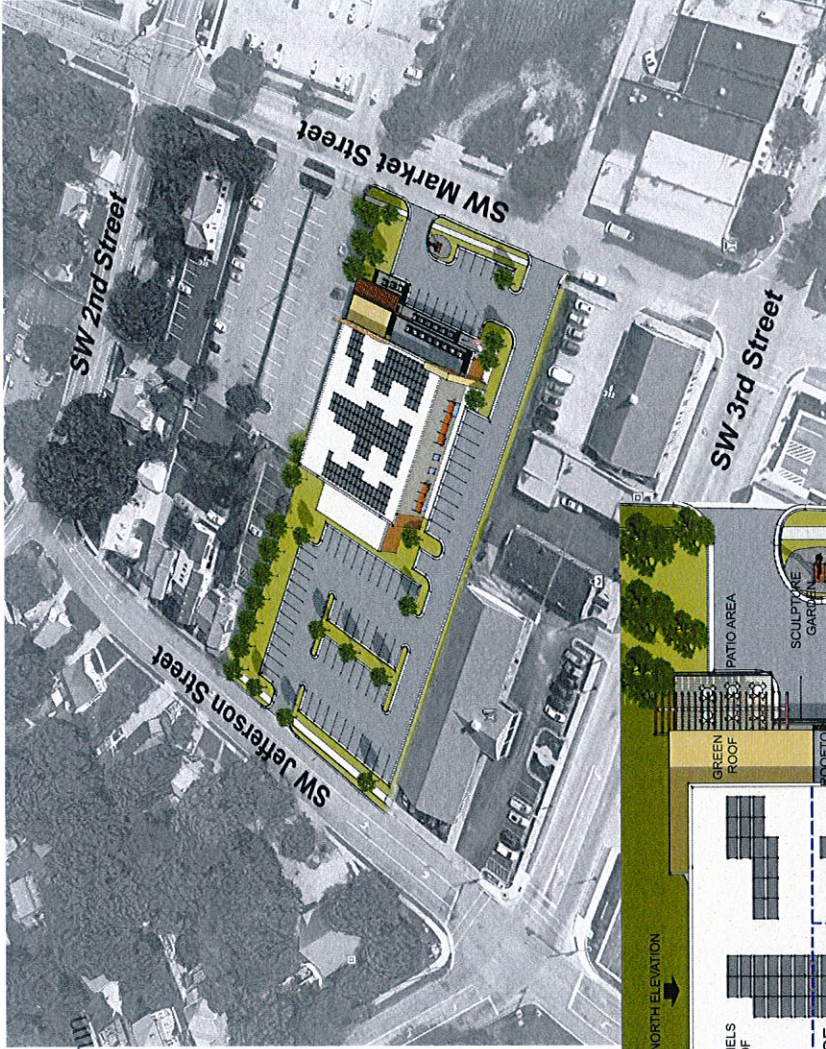


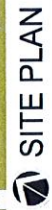
RECEIVED  
 NOV - 7 2016  
 Planning & Codes Admin



**Project Description**

Convert old Lee's Summit Post Office building to small Business / Retail. The site to be reworked for new parking, landscaping, and outdoor patio areas. Existing building elements to be kept and improved with paint, new windows, additional signage elements, green roof, solar panels, and outdoor patios. Refer to Building Elevations for extents of finishes.

Occupancy Type	Description
Retail	3,000 sf
Office	9,400 sf
Parking Spaces:	75



**hollis miller** architects

**co-work**  
 LEE'S SUMMIT

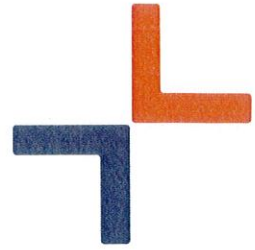


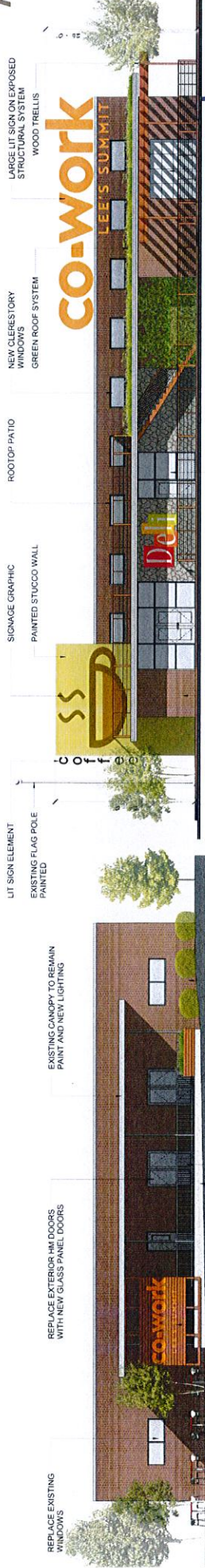
**INITIAL PHASE: SITE CONCEPT  
 POST OFFICE REDEVELOPMENT**

co-work - Lee's Summit

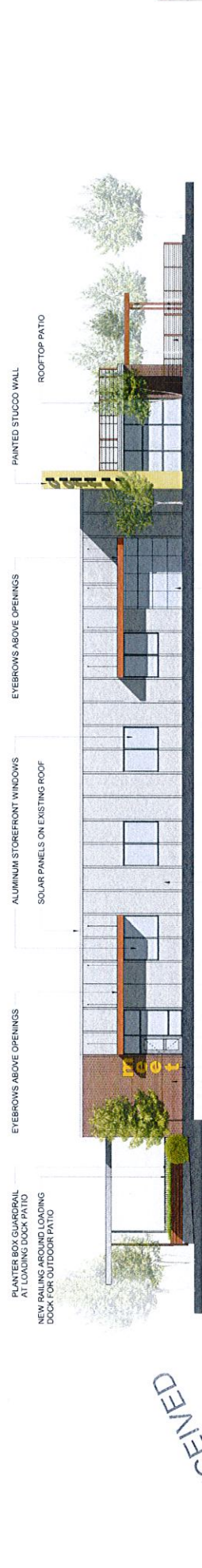
11.07.2016

-2016 - 199





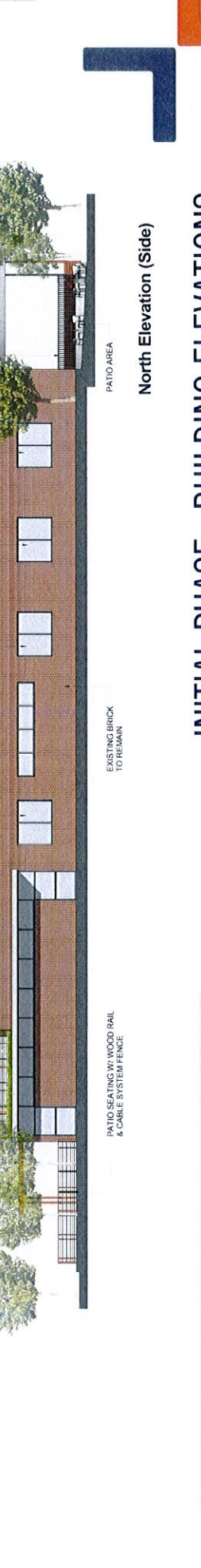
West Elevation (Rear)



East Elevation (Front)



South Elevation (Side)



North Elevation (Side)

RECEIVED  
NOV - 7 2016  
Planning & Codes Admin

INITIAL PHASE: BUILDING ELEVATIONS

**CO-work**  
LEE'S SUMMIT

**hollis** architects  
**fmiller**

SD DD CD

CO-work - Lee's Summit

11.07.2016

-2016-199

