

**Utility Notes**

- Boundary information, existing utilities and topographic features shown are based on information supplied by surveyor and others.
- The existing utility locations shown on these plans are approximate and may not include all utility lines present. The contractor shall be responsible to call MO ONE CALL and identify field location of all existing underground utilities prior to beginning excavation/construction activities.
- The contractor shall be responsible for any damage to any utilities or their structures during excavation/construction activities.
- The contractor shall coordinate all main taps and utility services, both temporary and permanent with the city and/or respective utility.
- Utilities shown on the plan with specific elevations and/or structure locations are SUE quality level "B", ie: storm sewer, sanitary sewer, water hydrants & valves and other above-grade utilities. All other existing utility information shown is SUE quality level "D", primarily retracement of one-call records.

**Utility Contacts**

SANITARY SEWERS - City of Lee's Summit, Phone (816) 969-7606,  
STORM SEWERS - City of Lee's Summit, Phone (816) 969-7307,  
WATER - City of Lee's Summit, Phone (816) 969-7606,  
ELECTRIC - Aquila, Phone (816) 737-7465  
GAS - Missouri Gas Energy, Phone (816) 969-2230  
TELEPHONE - Southwestern Bell Telephone, Phone (816) 275-8215  
CABLE - Time Warner Co., Phone (816) 358-5360



**SANITARY & STORM SEWER INVERTS**

|                                                                                                           |                                                                                               |
|-----------------------------------------------------------------------------------------------------------|-----------------------------------------------------------------------------------------------|
| SMH#1<br>SANITARY SEWER MANHOLE<br>TOP=1014.91<br>F/L WEST=1006.96<br>F/L SOUTH=1006.96                   | SWMH#1<br>STORM SEWER MANHOLE<br>TOP=1014.72<br>F/L NORTH=1010.77<br>F/L SOUTHWEST=1010.62    |
| SMH#2<br>SANITARY SEWER MANHOLE<br>TOP=1014.11<br>F/L NORTH=1006.26<br>F/L SOUTHEAST=1006.26              | CB#1<br>CATCH BASIN<br>TOP=1011.10<br>THROAT=1009.98<br>F/L WEST=1006.00<br>F/L NORTH=1008.20 |
| SMH#3<br>SANITARY SEWER MANHOLE<br>TOP=1015.23<br>F/L NORTHWEST=1005.93<br>F/L SOUTH=1005.63              | CB#2<br>CATCH BASIN<br>TOP=1000.94<br>THROAT=999.84<br>F/L NORTHWEST=996.74                   |
| SMH#4<br>SANITARY SEWER MANHOLE<br>TOP=1011.04<br>F/L NORTH=999.74<br>F/L SOUTH=999.59<br>F/L EAST=999.54 | CB#3<br>CATCH BASIN<br>TOP=999.34<br>THROAT=998.21<br>FULL OF MUD & DEBRIS                    |
| SMH#5<br>SANITARY SEWER MANHOLE<br>TOP=1000.93<br>F/L NORTH=990.73<br>F/L SOUTHEAST=990.73                | CB#4<br>CATCH BASIN<br>TOP=1001.86<br>THROAT=999.94<br>F/L EAST=997.46                        |
| SMH#6<br>SANITARY SEWER MANHOLE<br>TOP=997.24<br>F/L NORTHWEST=989.39                                     |                                                                                               |

**Symbols**

|  |                                 |
|--|---------------------------------|
|  | sanitary manhole                |
|  | service cleanout                |
|  | rectangular structure           |
|  | circular structure              |
|  | fire hydrant                    |
|  | water valve                     |
|  | water meter                     |
|  | backflow preventer              |
|  | natural gas meter               |
|  | electric pole                   |
|  | service transformer (pad mount) |
|  | primary switch gear             |
|  | street light                    |
|  | pedestrian street light         |
|  | private site lighting           |
|  | cable/phone/data junction box   |

**Property Legend**

--- ROW & Property Lines  
--- Easements

**Utility Legend**

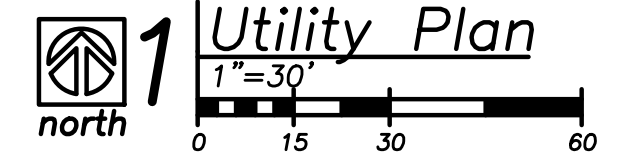
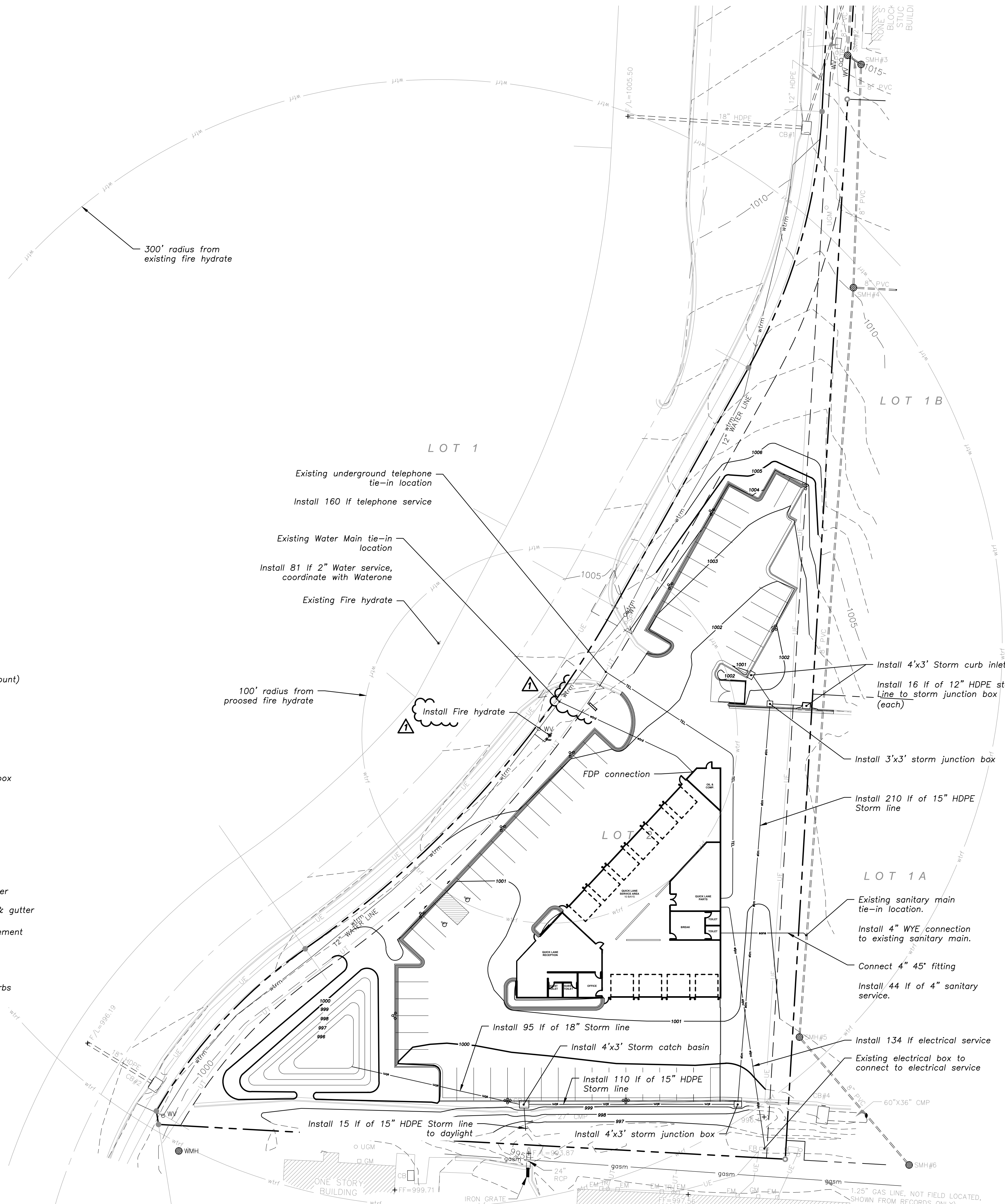
existing  
proposed

**Linetypes**

|  |                                     |
|--|-------------------------------------|
|  | sanitary main                       |
|  | sanitary service                    |
|  | storm sewer (solid wall)            |
|  | storm sewer (perforated)            |
|  | water main                          |
|  | water service (fire)                |
|  | water service (domestic)            |
|  | fire hydrant coverage (300' radius) |
|  | natural gas main                    |
|  | natural gas service                 |
|  | overhead primary electric           |
|  | underground primary electric        |
|  | underground secondary electric      |
|  | phone/cable/data feeder             |
|  | phone/cable/data service            |

**Construction Legend**

|  |                              |
|--|------------------------------|
|  | standard curb & gutter       |
|  | standard "dry" curb & gutter |
|  | standard asphalt pavement    |
|  | concrete pavement            |
|  | concrete sidewalk            |
|  | temporary asphalt curbs      |



a proposed new facility for  
**Bob Sight Quick Lane**  
NW Blue Parkway  
Lee's Summit, Missouri

date 11.21.16  
drawn by IRW  
checked by PAM  
revisions  
11.21.16 1

sheet number  
**C1.2**  
drawing type PDP  
project number 16192