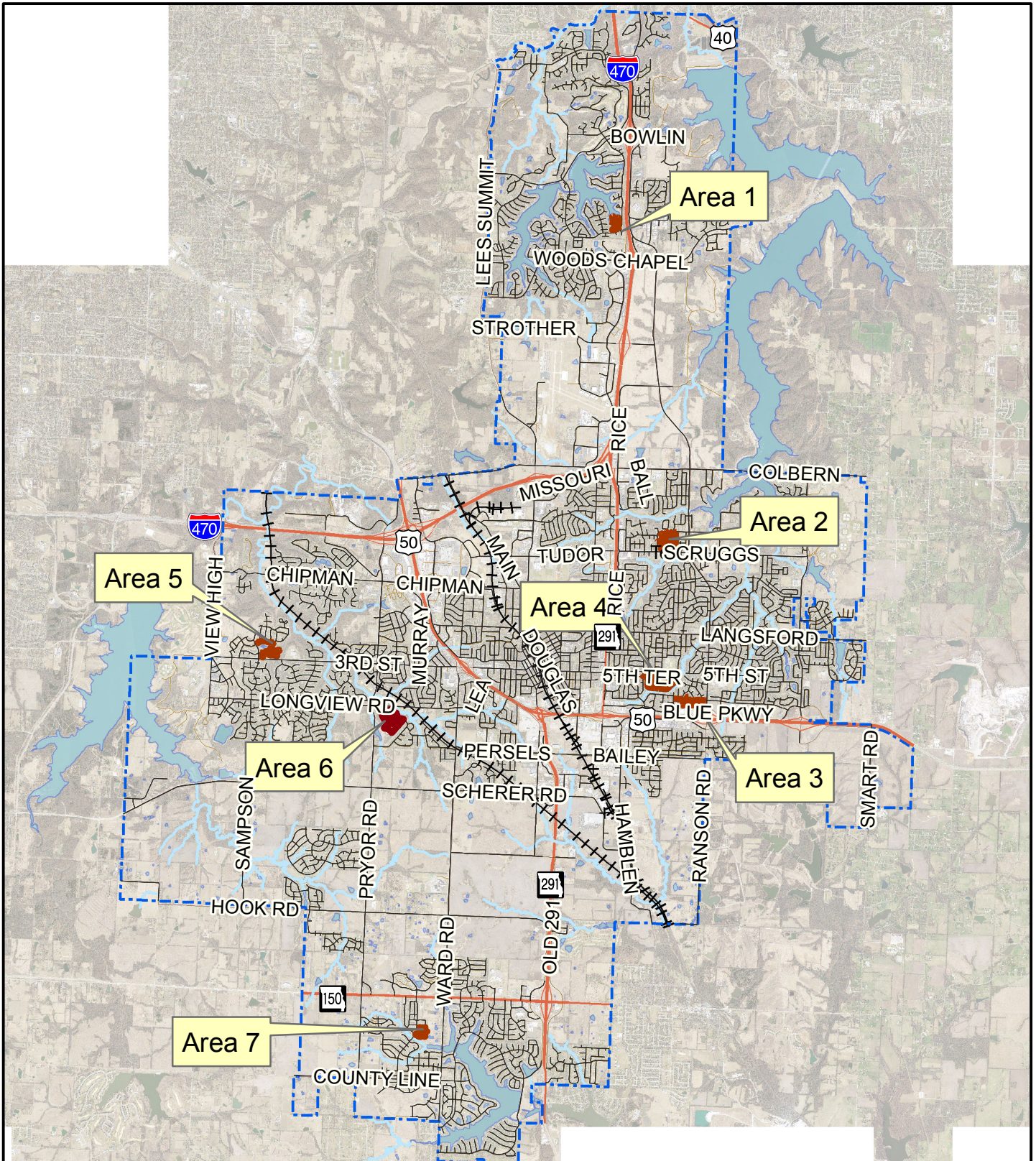


Curb Repair 18/19

		Curb LF	Ramps EA		Sidewalk SF	Driveway Residential SF
			A	M		
		\$20.58	\$1,146.96	\$1,145.54	\$7.86	\$8.75
Area 1	South Point	4,275	2	0	160	171
Area 2	Emerald View	11,185	6	10	2,080	447
Area 3	Silkwood	7,960	3	9	1,680	318
Area 4	Vista Del Verde	15,030	11	13	2,960	601
Area 5	Winterset Valley	8,589	8	11	2,400	344
Area 6	Summit Falls	13,755	0	0	0	551
Area 7	Parkwood	4,700	0	1	160	188
		65,494	30	44	9,440	2,620

City of Lee' Summit Curb Repair 18/19 Proj. No. 324-17/18 (curb)



Overview

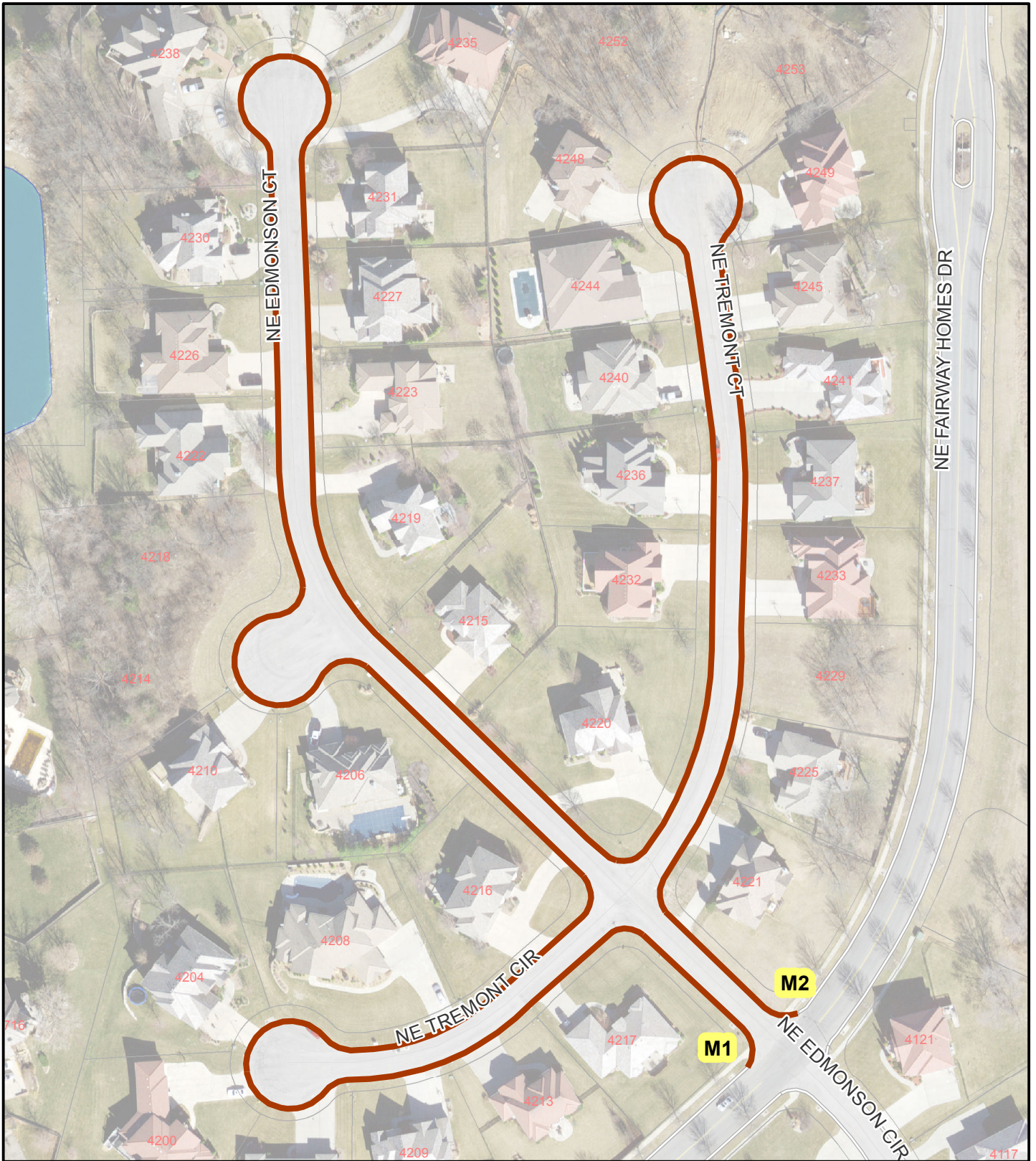


Legend

— Curb Replacement

City of Lee' Summit

Curb Repair 18/19 Proj. No. 324-17/18 (curb)



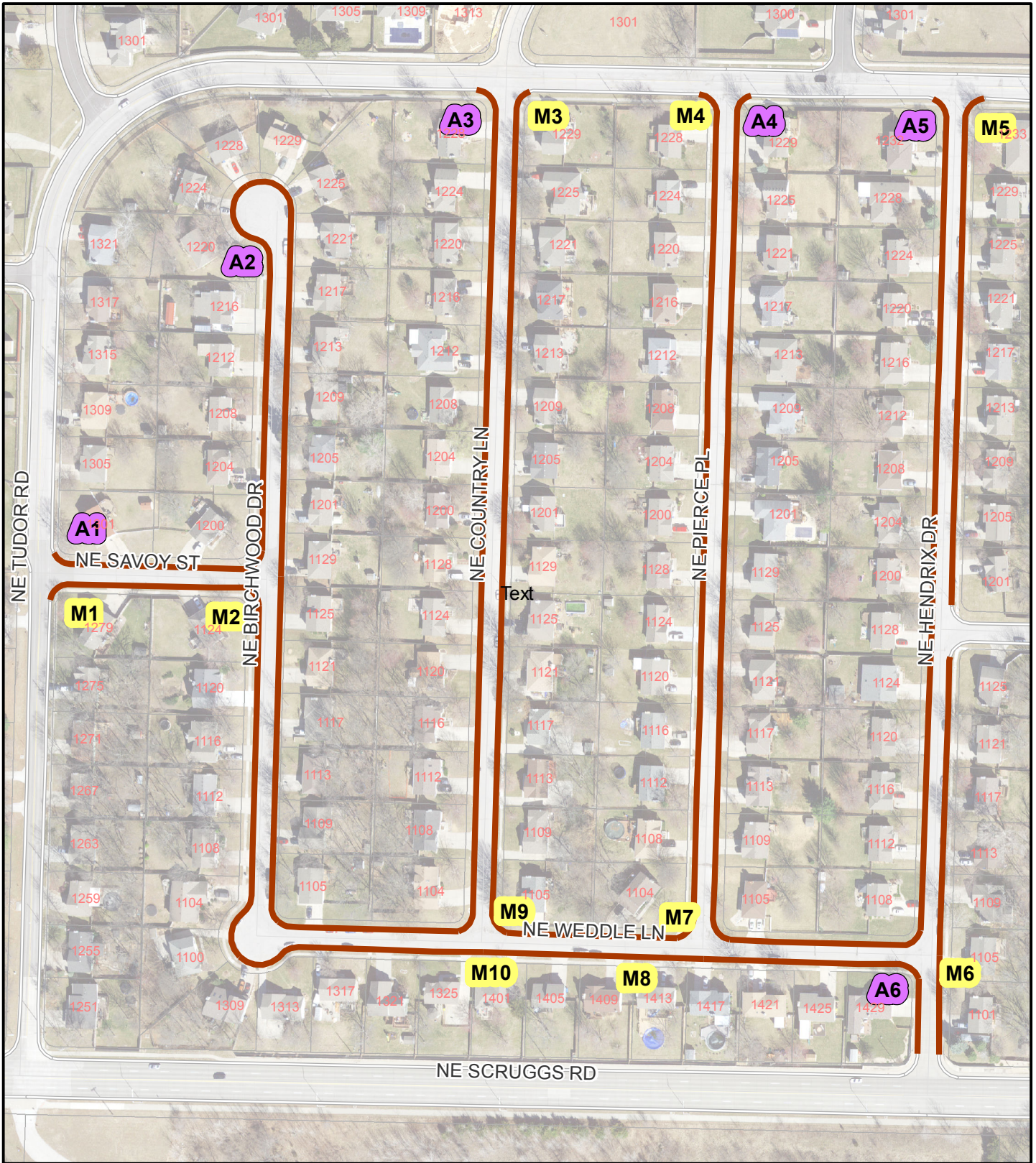
Area 1
South Point



- Curb Replacement
- A# Type A Sidewalk Ramp
- M# Type M Sidewalk Ramp

City of Lee' Summit

Curb Repair 18/19 Proj. No. 324-17/18 (curb)

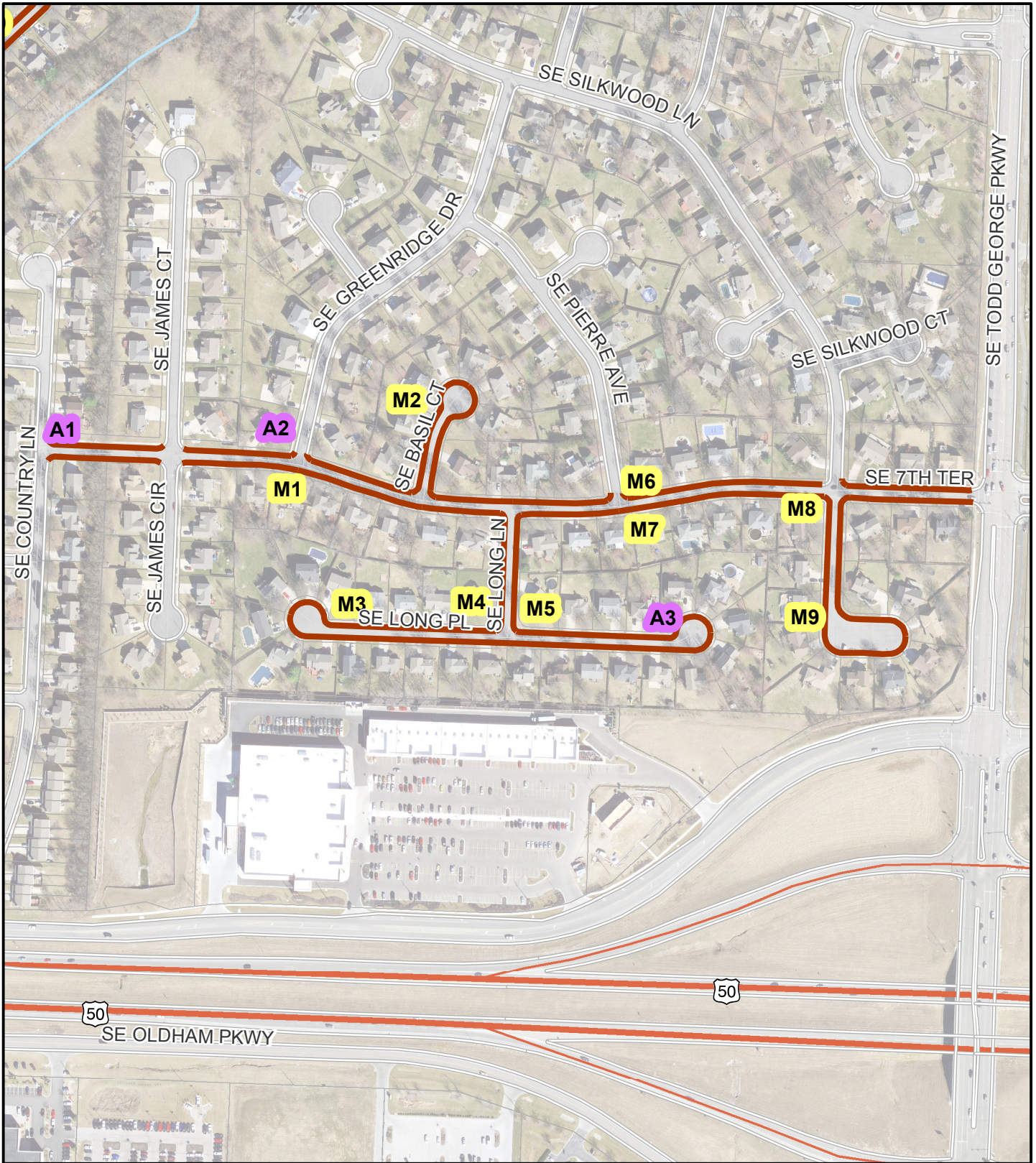


**Area 2
Emerald View**




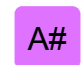

- Curb Replacement
- A# Type A Sidewalk Ramp
- M# Type M Sidewalk Ramp

City of Lee' Summit Curb Repair 18/19 Proj. No. 324-17/18 (curb)



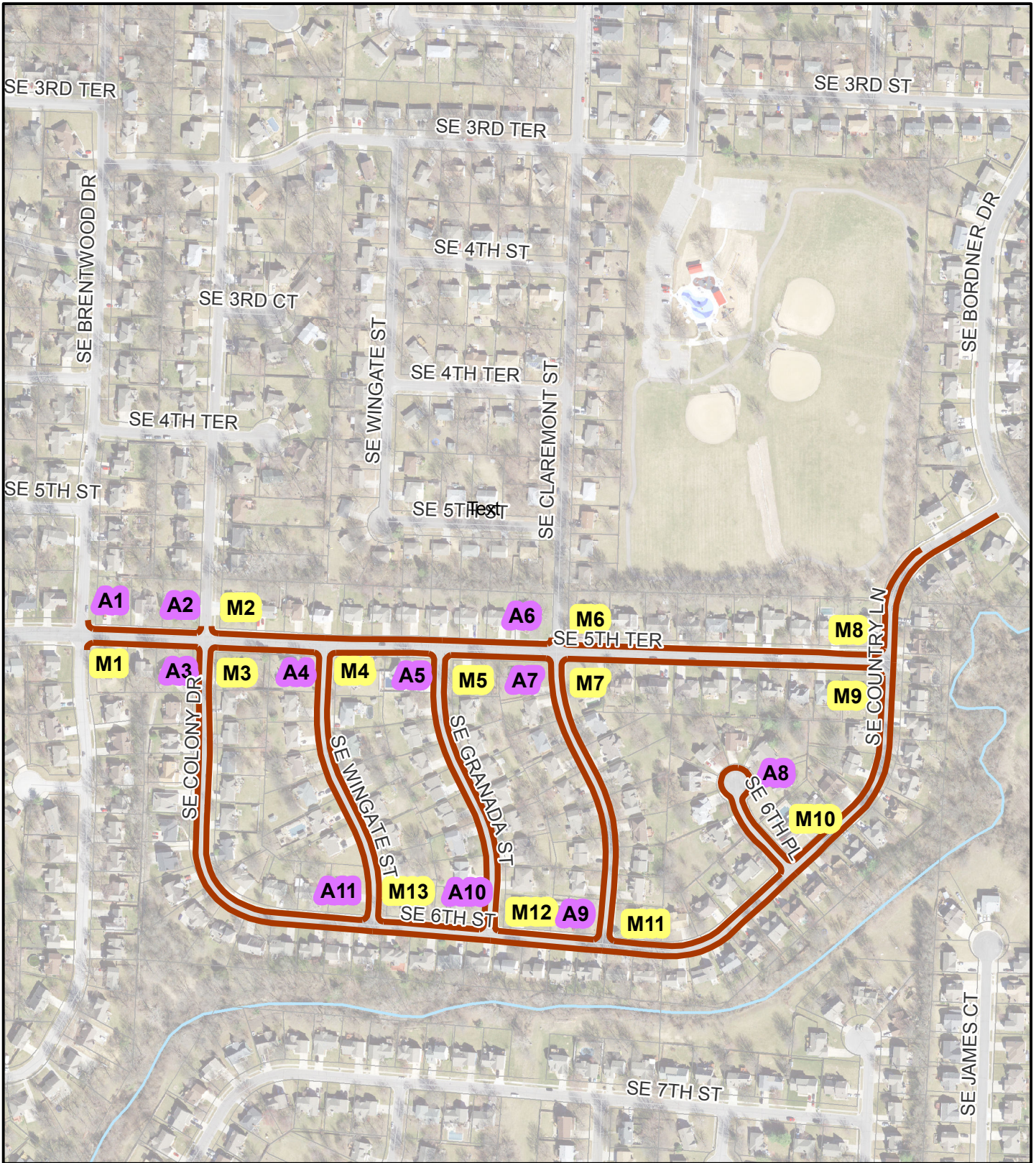
Area 3
Silkwood



-  Curb Replacement
-  Type A Sidewalk Ramp
-  Type M Sidewalk Ramp

City of Lee' Summit

Curb Repair 18/19 Proj. No. 324-17/18 (curb)



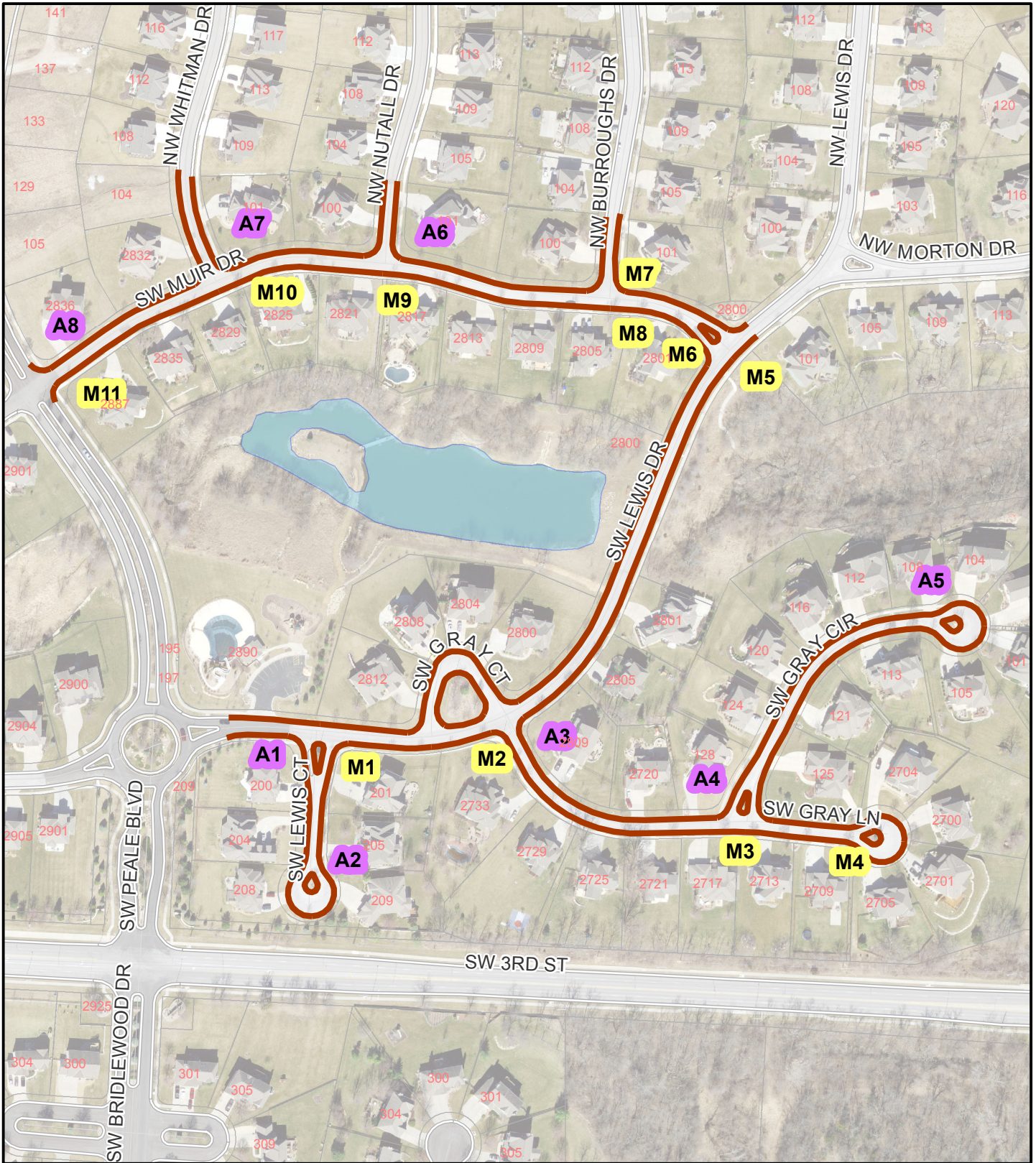
Area 4
Vista Del Verde



- Curb Replacement
- A# Type A Sidewalk Ramp
- M# Type M Sidewalk Ramp

City of Lee' Summit

Curb Repair 18/19 Proj. No. 324-17/18 (curb)



Area 5
Winterset Valley



- Curb Replacement
- A# Type A Sidewalk Ramp
- M# Type M Sidewalk Ramp

City of Lee' Summit

Curb Repair 18/19 Proj. No. 324-17/18 (curb)



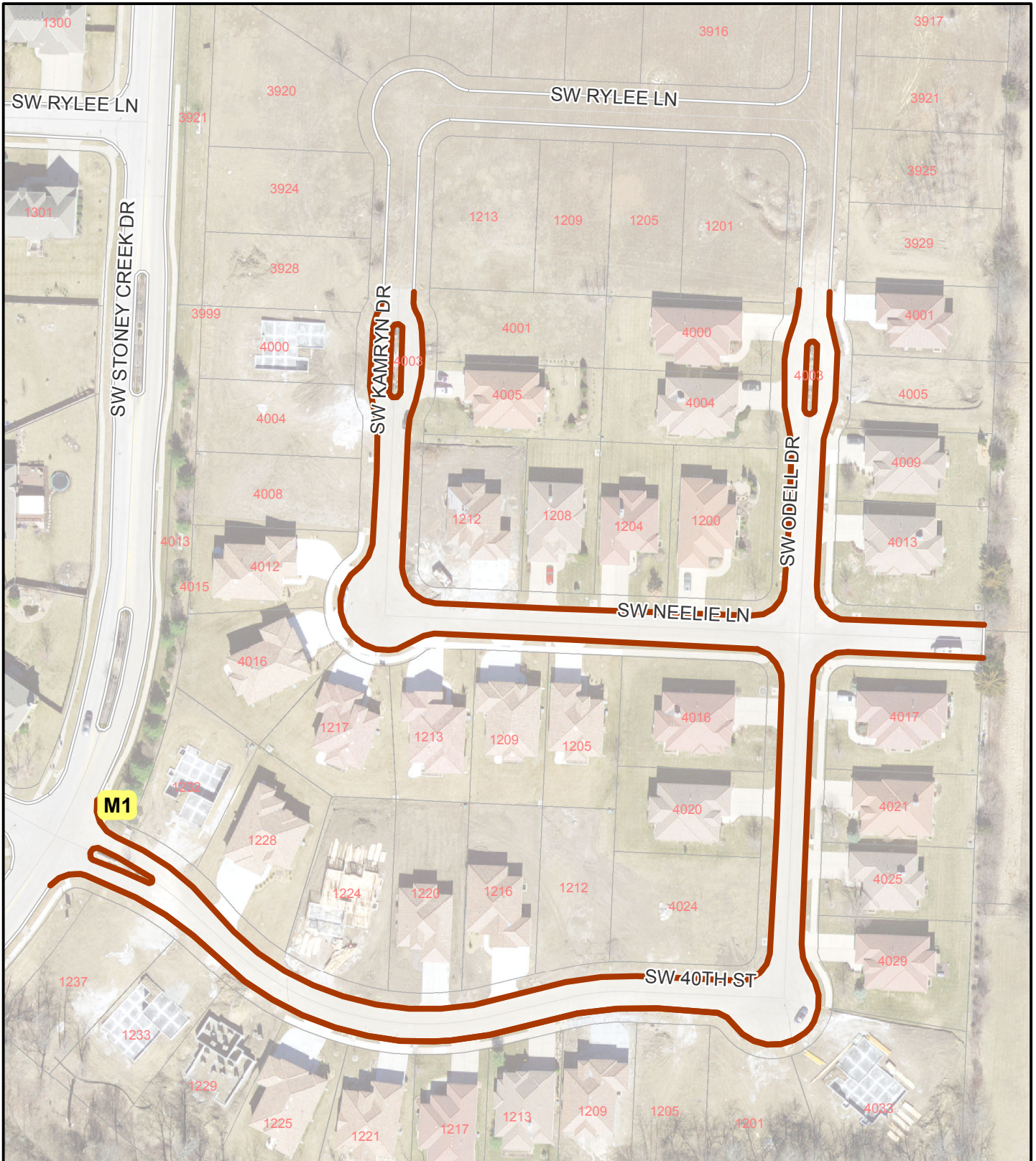
**Area 6
Summit Falls**



- Curb Replacement
- A# Type A Sidewalk Ramp
- M# Type M Sidewalk Ramp

City of Lee' Summit

Curb Repair 18/19 Proj. No. 324-17/18 (curb)



**Area 7
Parkwood**



- Curb Replacement
- A# Type A Sidewalk Ramp
- M# Type M Sidewalk Ramp