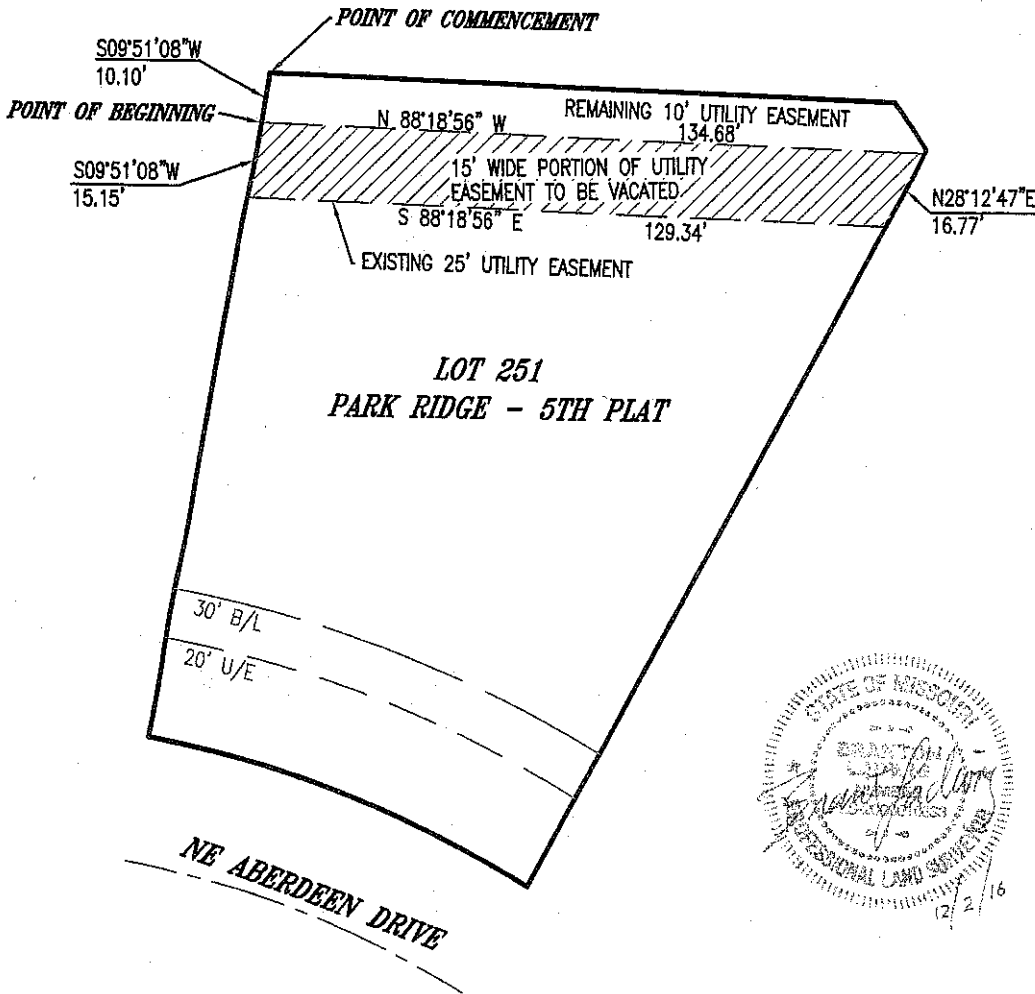
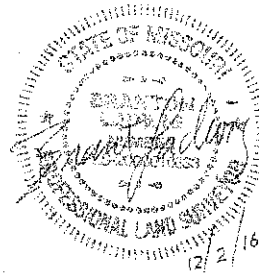


EXHIBIT "A" 15' UTILITY EASEMENT



LEGAL DESCRIPTION:

A 15' wide portion of an existing 25' wide utility easement parallel to the North line of Lot 251, Park Ridge - 5th Plat, a subdivision of record in Lee's Summit, Jackson County, Missouri; more particularly described as;
 Commencing at the Northwest corner of said Lot 251; thence South 09 degrees 51 minutes 08 seconds West, along the West line of said Lot 251, a distance of 10.10 feet, to the Point of Beginning; thence South 09 degrees 51 minutes 08 seconds West, along the West line of said Lot 251, a distance of 15.15 feet; thence South 88 degrees 18 minutes 56 seconds East, along a line 25' South of and parallel to the North line of said Lot 251, a distance of 129.34 feet, to a point on the East line of said Lot 251, thence North 28 degrees 12 minutes 47 seconds East, along the East line of said Lot 251, a distance of 16.77 feet; thence North 88 degrees 18 minutes 56 seconds West, along a line 10' South of and parallel to the North line of said Lot 251, a distance of 134.68 feet, to the Point of Beginning.



LADWIG & ASSOCIATES, LLC.
 LAND SURVEYORS
 33604 E. 235th Street
 Pleasant Hill, Missouri 64080
 816-309-6621

-2016-221-

RECEIVED

DEC 5 2016

Planning & Codes Admin