

Rader Real Estate Office Preliminary Development Plan

PL2019-391

February 27, 2020



LEE'S SUMMIT
MISSOURI



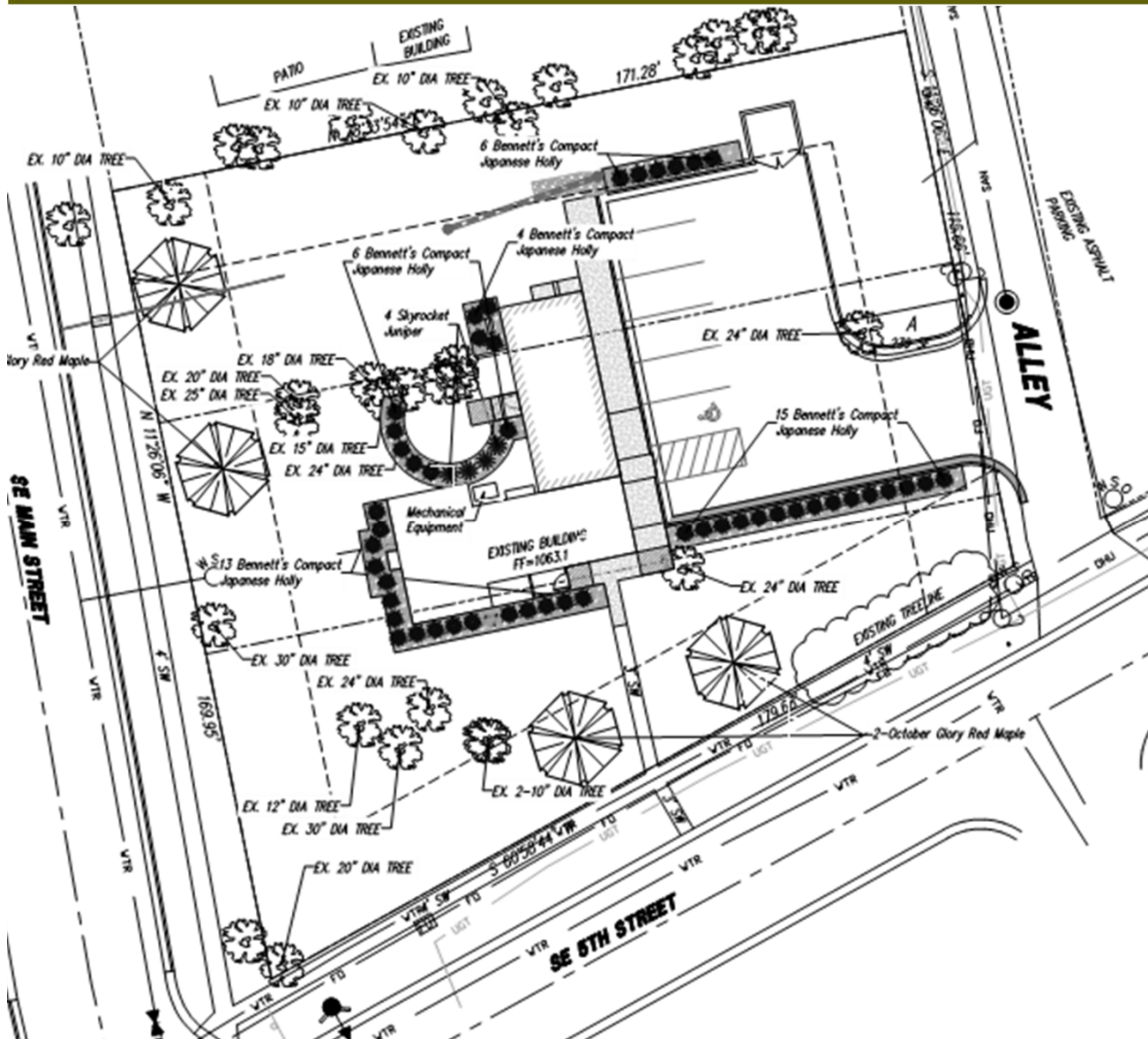
Yours Truly

Aerial Map



Zoning Map





Building Height
17' 6"

Number of Stories
1 story

Floor Area Ratio
0.07 (No Max)

Lot Coverage
27% (80% Max)

Parking
7 (proposed)
7 (required)

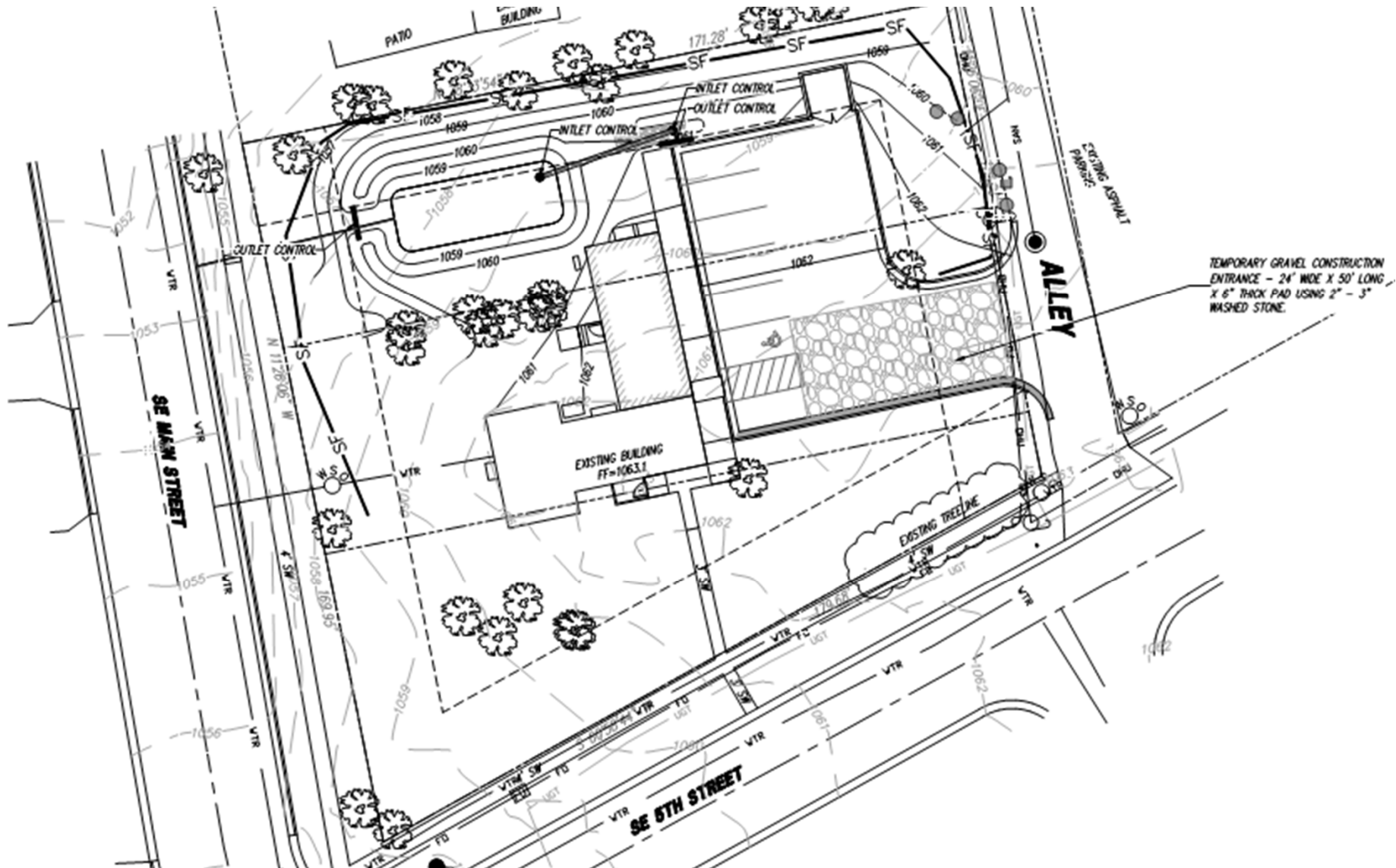


Project Information



LS

Elevations



Staff Analysis



LS

Conditions of Approval