

1970s

1980s

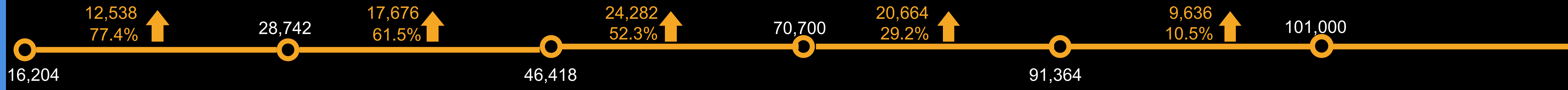
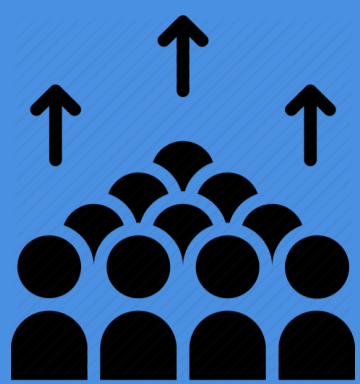
1990s

2000s

2010s

2020s

population growth



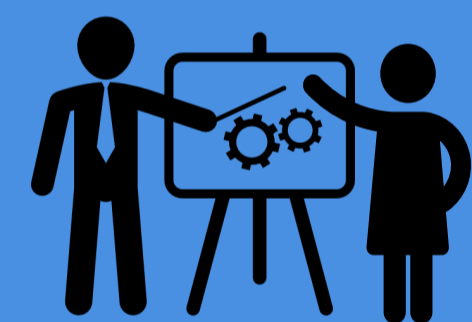
issues



- sewer system
- water supply
- transportation
- parks & rec system
- police station
- fire dept support

continued into 1990s

strategic planning



solutions



- sales tax leakage
- stormwater
- poor highway access
- need design standards
- transportation impact
- demand for cultural arts
- downtown vitality

- stormwater
- curbs
- police presence
- employee compensation
- fire/EMS
- demand for cultural arts

continued into 2020s

- balanced economic development
- strong neighborhoods with housing choices
- cultural and recreational activities
- inclusive community engagement
- community health and well-being
- collaborative relations w/ education partners
- proactive infrastructure development

Lee's Summit: 21st Century

GO bond: Quality '88

- 3/8 cent sales tax for park improvements
- 1/2 cent sales tax for transportation
- GO bonds for:
 - police/court facility
 - fire station #6
- water tap fee
- sewer connection fee
- 1/2 cent sales tax for capital improvements
- hotel/motel tax
- transportation excise tax
- adoption of charter

Lee's Summit 360

- Summit Woods TIF
- I-470 & Chapel Ridge TIF
- access management policy
- downtown master plan
- adoption of UDO
- adoption of design standards
- 1/4 of 1% sales tax for parks
- 1/2 cent sales tax for capital improvements renewed
- amendments to the charter
- GO bonds for:
 - maintenance/street facility
 - downtown improvements
 - new city hall
 - stormwater improvements
 - public safety - fire station & animal control
 - sidewalk rehab
 - connectivity program
 - salt dome

- increase compensation program
- increase police districts from 7 to 10
- added 2 ambulances, 9 staff at fire station #6
- GO bonds for public safety:
 - emergency services radio
 - police facility improvements
 - indoor firearm training
 - emergency services radio equipment & connectivity
 - fire station #3
 - equipment & apparatus
- GO bonds for:
 - public infrastructure (curbs, sidewalks)
 - 291/50 hwy improvements
- parks 1/4 cent & capital improvements 1/2 cent sales taxes (cont. 15 yrs)
- downtown cultural arts center & Legacy Park amphitheater
- economic development policy

Ignite! Your ideas. Our future.